



High Trees, SW2

£2,700 Per calendar month

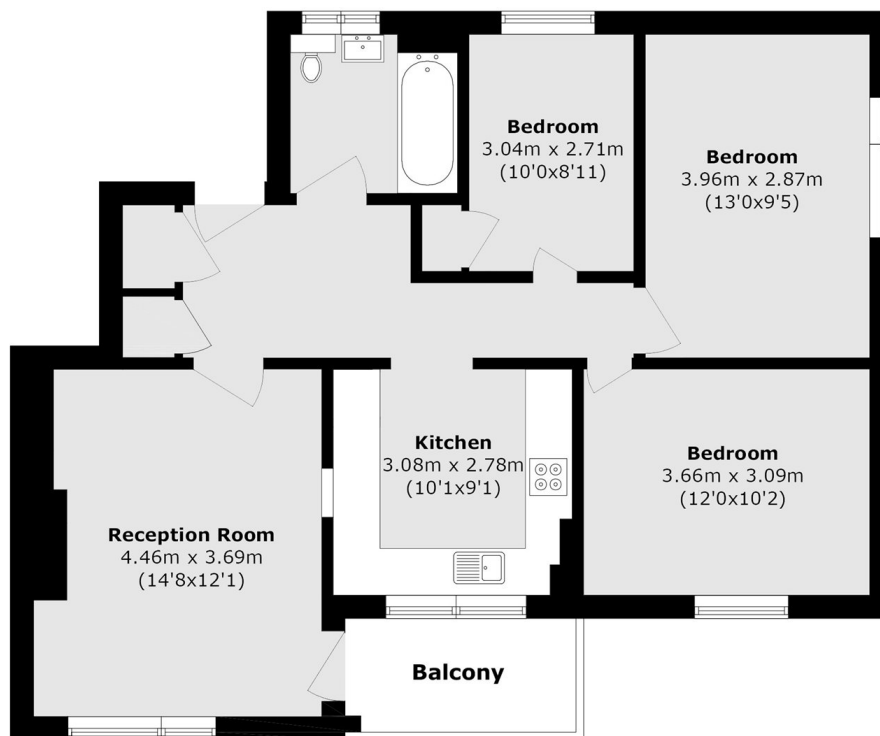
This three bedroom flat has been recently renovated throughout. Offering a separate living area leading onto a private balcony, modern kitchen and bathroom and three good sized double bedrooms. This property is perfect for three professionals looking for great transport links.

Roycroft Close is located close by to Brixton Underground Station, Herne Hill Overground and Brockwell Park. Close by to all the amenities Brixton has to offer along with plenty of different transport options, this apartment is perfect for those who need to commute.

Features

- Three Bedroom Flat
- Private Balcony
- Recently Refurbished
- Modern Bathroom
- Separate Kitchen
- Wooden Floors Throughout

High Trees, London, SW2



Third Floor

Total area (approx.): 73.2 sq. m (787.9 sq. ft)

Balcony area (approx.): 4.0 sq. m (43.1 sq. ft)