



## Telford Avenue, SW2

**£1,900** Per calendar month

A split level maisonette with two equal sized double bedrooms and an open plan kitchen/reception room and modern bathroom. This property is ideal for two professionals.

Situated within the sought after conservation area, Telford Avenue is a popular residential road that is within easy reach of both Balham and Streatham town centres providing fantastic bus and rail links to the city.

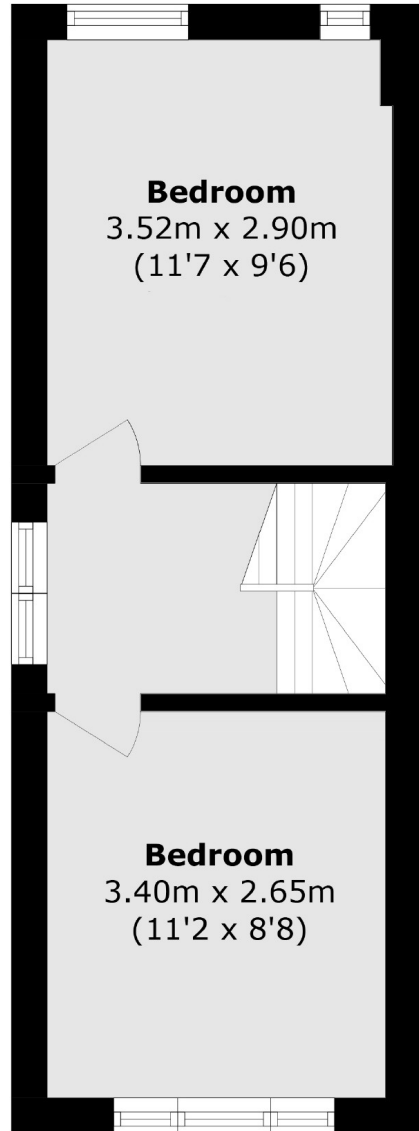
### Features

- Two Double Bedrooms
- Open Plan Kitchen/Reception
- Neutral Decor
- Wooden Flooring
- Split Level
- Maisonette

# Telford Avenue, London, SW2



**Ground Floor**



**First Floor**

Total area (approx.): 49.2 sq. m (529.5 sq. ft)