



**Tierney Road, SW2**

**£595,000**

**Dexters**



## Tierney Road, SW2

In immaculate condition throughout is this two double bedroom apartment, occupying the first floor of this period property. With large bay window the bright reception has high ceilings as well as a feature fireplace built in alcove shelves.

The bathrooms and kitchen have been stylishly renovated throughout. The two double bedrooms have fitted wardrobes with the primary bedroom featuring a bay window overlooking the private garden and an en-suite shower room. The rear private garden is gated and has a large gravel and deck area. There is also the added benefit of the property coming with a share in the freehold.

Ideally situated for the amenities of Streatham including shops, restaurants and bars, the property is also within easy reach of Streatham Hill station providing links to London Victoria and excellent bus routes to Brixton and Clapham Common where the tube can be accessed.

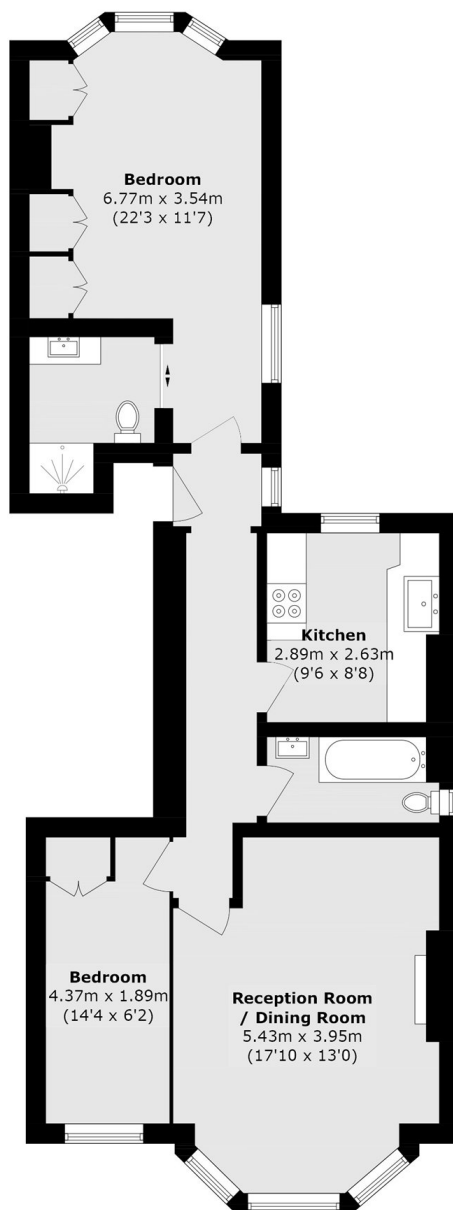
### Features

- Two Double Bedrooms
- Private Garden
- Separate Kitchen
- First Floor
- High Ceilings
- Share of Freehold





# Tierney Road, London, SW2



Total area (approx.): 70.8 sq. m (762.0 sq. ft)

## Dexters

Streatham  
105 Streatham Hill  
London  
SW2 4UG  
Sales  
020 8674 7400

Energy Rating: C. We aim to make our particulars both accurate and reliable. However they are not guaranteed; nor do they form part of an offer or contract. If you require clarification on any points then please contact us, especially if you're traveling some distance to view. Please note that appliances and heating systems have not been tested and therefore no warranties can be given as to their good working order.

 **RICS** | Regulated  
Estate Agent  
and Letting Agent

[dexters.co.uk](https://www.dexters.co.uk)