



Trinity Rise, SW2

£575,000

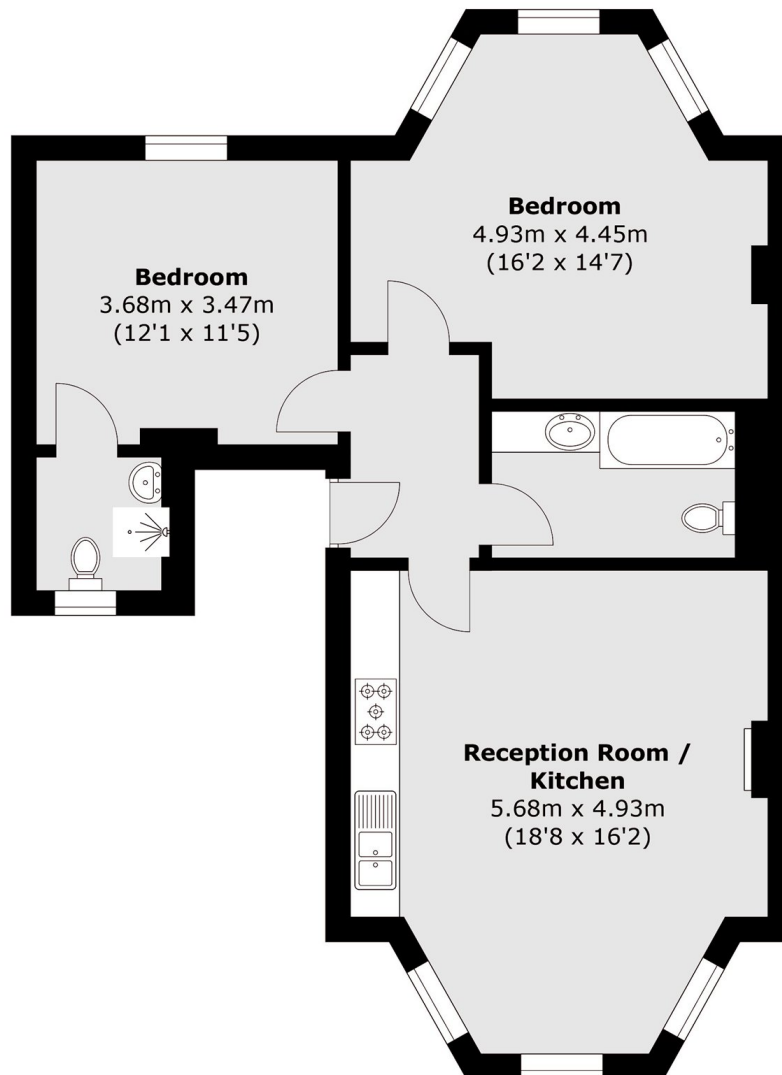
This charming two double bedroom period property, located just moments from Brockwell Park, is coming to the market with no onward chain. The home features a spacious reception room, a shared garden, and an allocated parking space on the driveway, offering both character and convenience in a highly sought-after location.

Situated on the highly sought after Trinity Rise, this property benefits from an exceptional location on the border of Brixton, Herne Hill, and Tulse Hill. With easy access to a wide selection of independent shops, cafés, restaurants, and local amenities. Brockwell Park - one of South London's most loved green spaces is just moments away, offering acres of open parkland, a lido, sports facilities, and stunning hilltop views.

Features

- Two Double Bedrooms
- Allocated Parking Space
- Shared Garden
- Brockwell Park
- No Onward Chain
- Over 730 Sq Ft

Trinity Rise, London, SW2



Total area (approx.): 76.2 sq. m (781.5 sq. ft)

Dexters

Streatham
105 Streatham Hill
London
SW2 4UG
Sales
020 8674 7400

Energy Rating: C. We aim to make our particulars both accurate and reliable. However they are not guaranteed; nor do they form part of an offer or contract. If you require clarification on any points then please contact us, especially if you're traveling some distance to view. Please note that appliances and heating systems have not been tested and therefore no warranties can be given as to their good working order.

 **RICS** | Regulated
Estate Agent
and Letting Agent

[dexters.co.uk](https://www.dexters.co.uk)