



Palace Road, SW2

£330,000

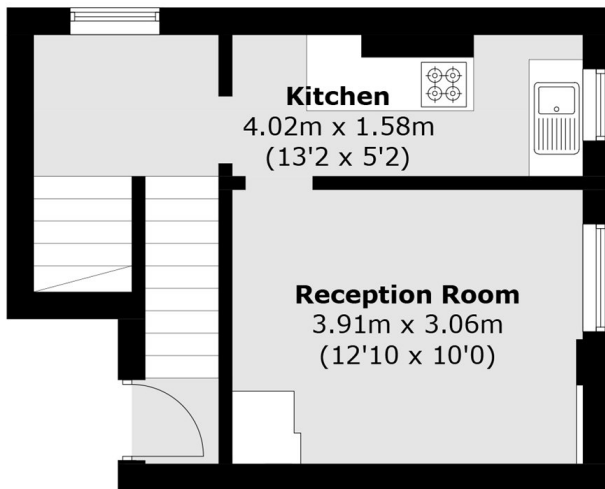
A bright and characterful split-level one-bedroom period conversion, ideally located on one of Tulse Hill's most sought-after roads. This well-presented property offers over 500 sq ft of thoughtfully arranged floorspace and is neutrally decorated throughout making it an ideal purchase for a first-time buyer or those looking to downsize.

Palace Road is a highly sought-after location, ideally positioned moments from Tulse Hill station, offering direct rail links to London Bridge, as well as frequent bus services to Brixton and Clapham. The property is perfectly placed to enjoy a wide selection of bars, restaurants and shops along Norwood Road.

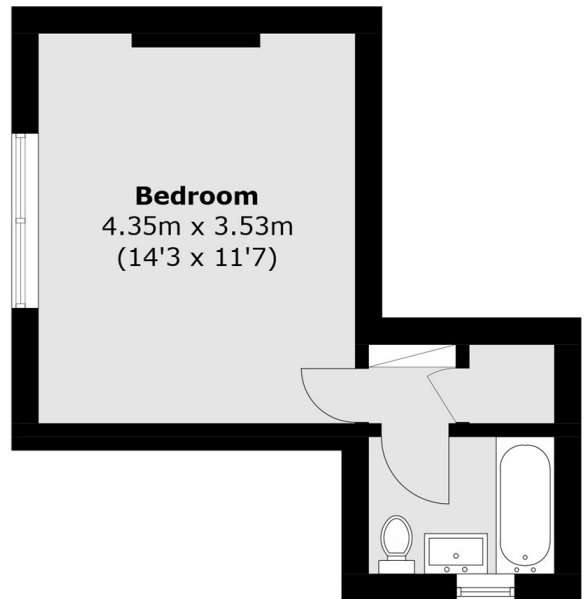
Features

- One Double Bedroom
- Over 500 sq ft
- Split Level
- Desirable Location
- Close to Station
- Chain Free

Palace Road, London, SW2



Third Floor



Fourth Floor

Total area (approx.): 47.9 sq. m (515.6 sq. ft)