



Pendennis Road, SW16

£400,000

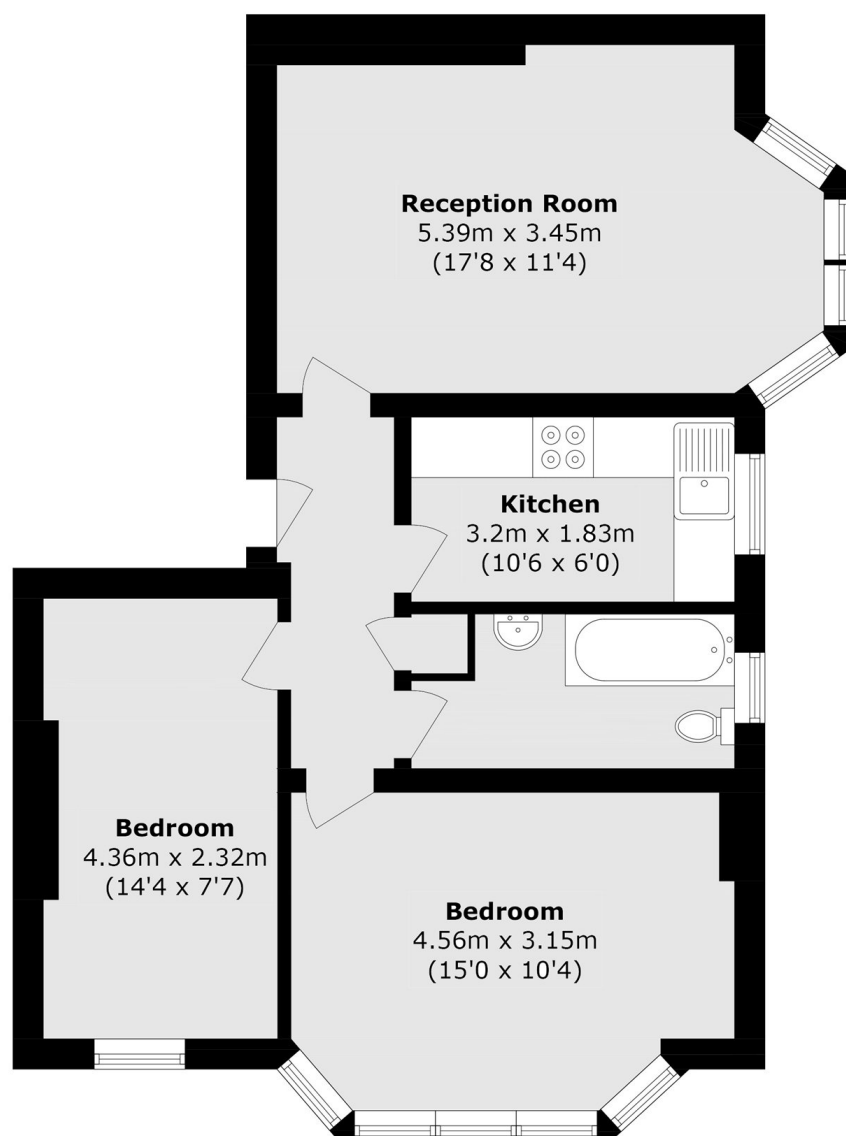
A charming first-floor period conversion offering a perfect blend of classic character and modern living. This spacious two-bedroom apartment boasts two generously sized double bedrooms, a bright and airy reception room featuring a fireplace and large bay window, which flood the space with natural light. The property combines period features with contemporary comfort, making it an ideal home for those seeking both style and convenience.

Ideally located just off Streatham High Road, Pendennis Road is conveniently positioned between Streatham and Streatham Hill mainline stations, both offering excellent links into the City and the West End. A variety of frequent bus routes also provide easy access to Brixton and the surrounding areas.

Features

- Two Double Bedrooms
- Close to Station
- High Ceilings
- Bright Flat
- Good Location
- Share Of Freehold

Pendennis Road, London, SW16



Total area (approx.): 58.5 sq. m (629.6 sq. ft)