



Lilian Road, SW16

£550,000

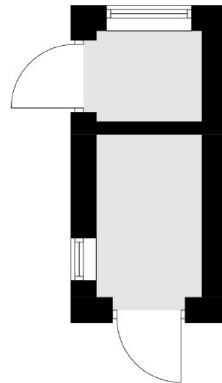
A charming, well maintained, three bedroom terraced property located in Streatham Vale. With front facing reception, kitchen diner and landscaped garden this property is a perfect family home. Two of the bedrooms are spacious doubles whilst the third is ideal for a nursery or study. There is a modern bathroom and further potential to extend into the loft space.

Lilian Road is a quiet street located in Streatham Vale. Streatham Common station is nearby which offers fast and frequent links into Central London. There are a range of local shops and restaurants within walking distance as well as the open space of Streatham Common. The property benefits from being in the catchment area of some great local schools.

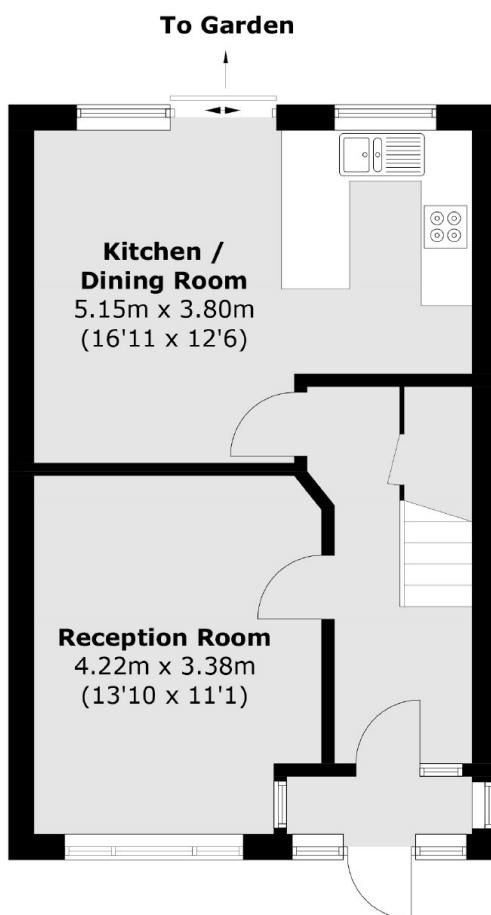
Features

- Three Bedrooms
- Open Plan Kitchen/Diner
- Landscaped Garden
- Quiet Location
- Modern Bathroom
- Potential to Extend

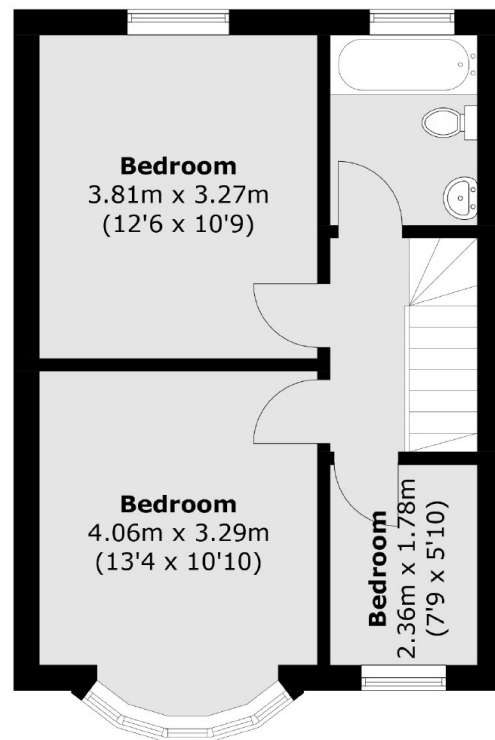
Lilian Road, London, SW16



(Not Shown In Actual
Location / Orientation)



Ground Floor



First Floor

Total area (approx.): 82.2 sq. m (884.7 sq. ft)
Outdoor Storage: 4.1 sq. m (44.1 sq. ft)