



Leigham Court Road, SW16

£550,000

At over 1,000sqft is this grand, two double bedroom property. With impressive proportions throughout this home has a large open-plan living space with modern kitchen and large bay window. The two double bedrooms are spacious and the main bedroom has a walk-in-wardrobe leading through to an en-suite.

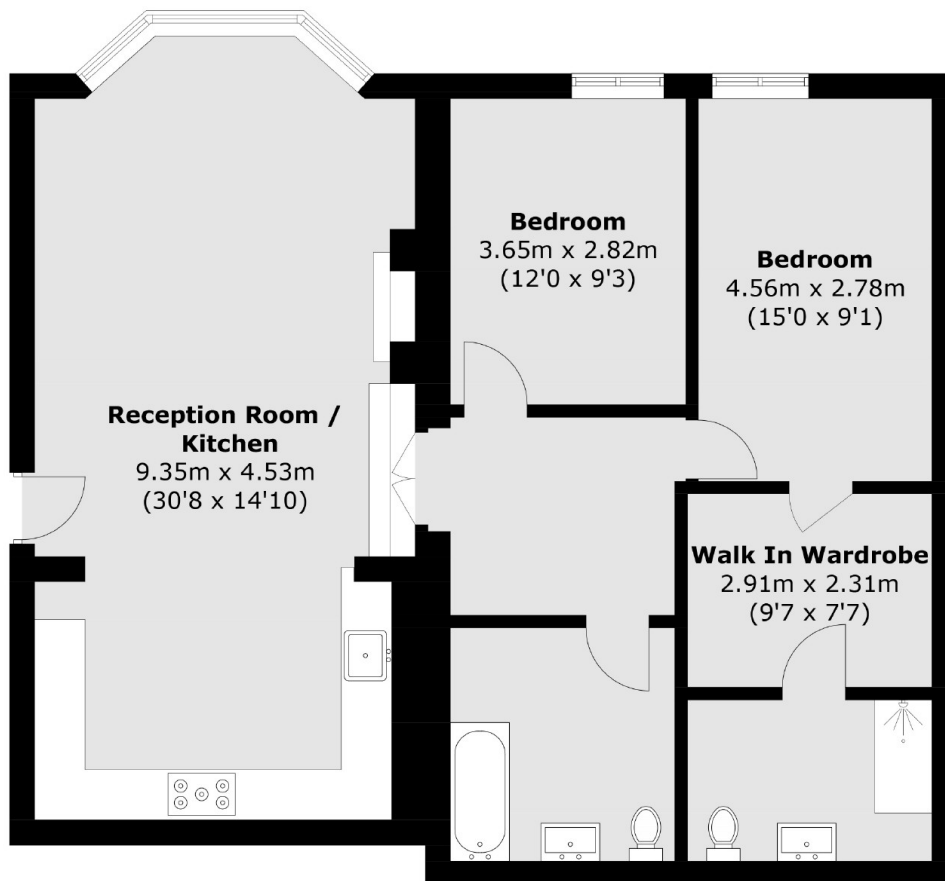
There is a central hallway where the bedrooms lead off as well as a modern family bathroom. This home has the added bonus of being offered to the market with no onward chain and a private off-street parking space.

Leigham Court Road is only a short walk away from Streatham Hill Station providing links into the city. Streatham High road is full of local shops, restaurants and bars which can be easily accessed from the property.

Features

- Two Double Bedrooms
- Two Bathrooms
- High Ceilings
- Chain Free
- Close to Station
- Large Open-Plan Living

Leigham Court Road, London, SW16



Total area (approx.): 96.6 sq. m (1,039.8 sq. ft)

Dexters

Streatham
105 Streatham Hill
London
SW2 4UG
Sales
020 8674 7400

Energy Rating: C. We aim to make our particulars both accurate and reliable. However they are not guaranteed; nor do they form part of an offer or contract. If you require clarification on any points then please contact us, especially if you're traveling some distance to view. Please note that appliances and heating systems have not been tested and therefore no warranties can be given as to their good working order.

 **RICS** | Regulated
Estate Agent
and Letting Agent

[dexters.co.uk](https://www.dexters.co.uk)