



Leigham Vale, SW16

£450,000

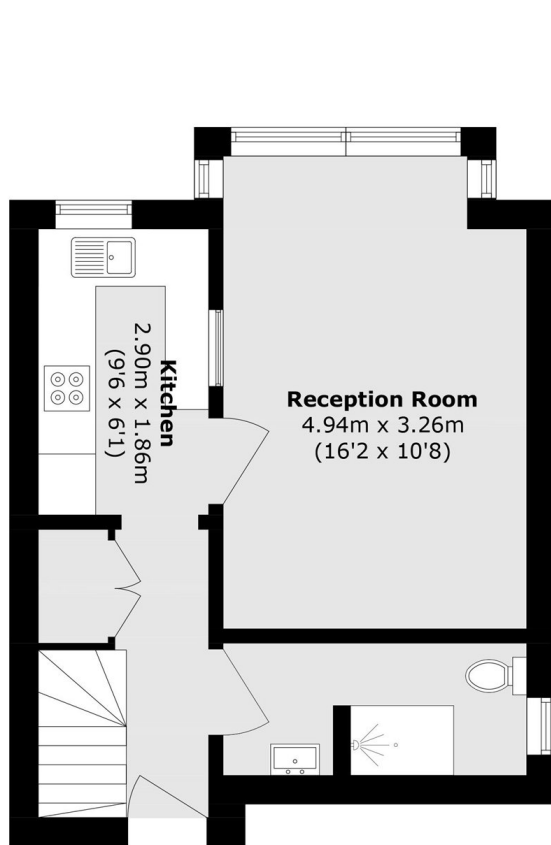
Spread over two floors is this two double bedroom period conversion close to Tulse Hill Station. The kitchen is open through a hatch to the living/dining space creating a separate, yet social area. There is a modern shower room as well as two double bedrooms and plenty of eaves storage. There is also the added benefit of a share in the freehold.

Leigham Vale is surrounded by great schools, including Hitherfield and Dunraven. Tulse Hill station is a short walk away for the Thameslink service. The property is also a 15 minutes' walk to Streatham Hill station with direct trains to Clapham Junction and Victoria. Brockwell Park and Streatham Common are also nearby for recreation, plus West Norwood High St and Streatham Hill for shops and local amenities.

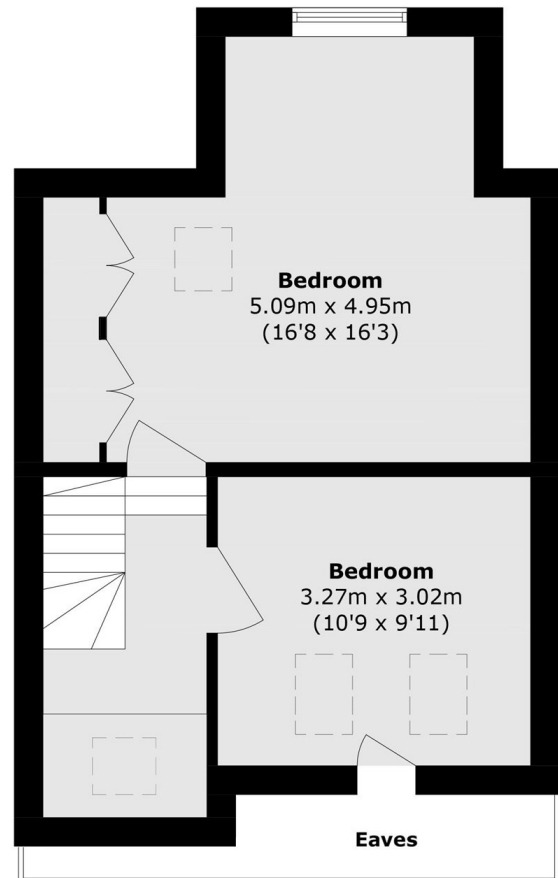
Features

- Two Double Bedrooms
- Split Level
- Close to Station
- Eaves Storage
- Good condition
- Share of Freehold

Leigham Vale, London, SW16



First Floor



Second Floor

Total area (approx.): 68.5 sq.m (737.3 sq. ft)
(Excluding Eaves)