



Baldry Gardens, SW16

£330,000

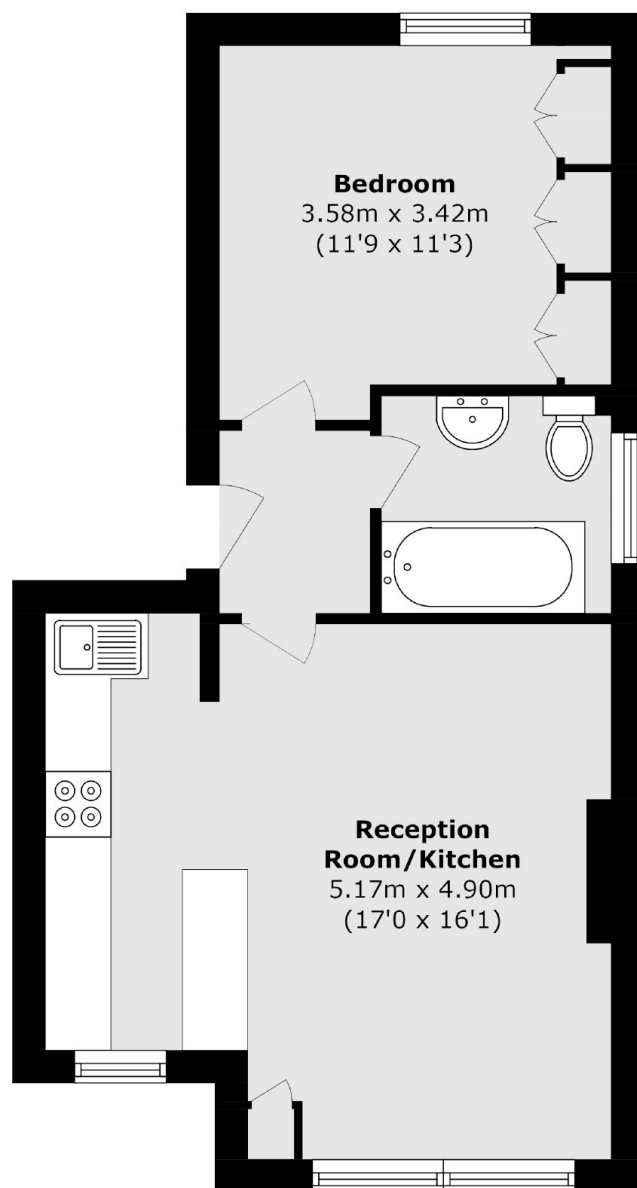
This first floor period one bedroom stylish home is the perfect first time buy. It benefits from a large open-plan living space this property has plenty of light with high ceilings throughout, the property has been renovated and has a shared garden.

Baldry Gardens is a charming street near Streatham Common. It is located just off Streatham High Road which offers a range of shops, pubs and restaurants. Streatham Station and Norbury Station offer Links into London Victoria and London Bridge.

Features

- One Double Bedroom
- Shared Garden
- Open-Plan Living
- Great Condition
- Sought After Street
- Next to The Common

Baldry Gardens, London, SW16



Total area (approx.): 42.5 sq. m (457.4 sq. ft)