



Ardwell Road, SW2

£485,000

Perfect for couples or those looking to share, this stunning two bedroom, third floor apartment is presented to an exceptional standard and benefits from over 800 Sq Ft of living space and a large open plan kitchen/reception.

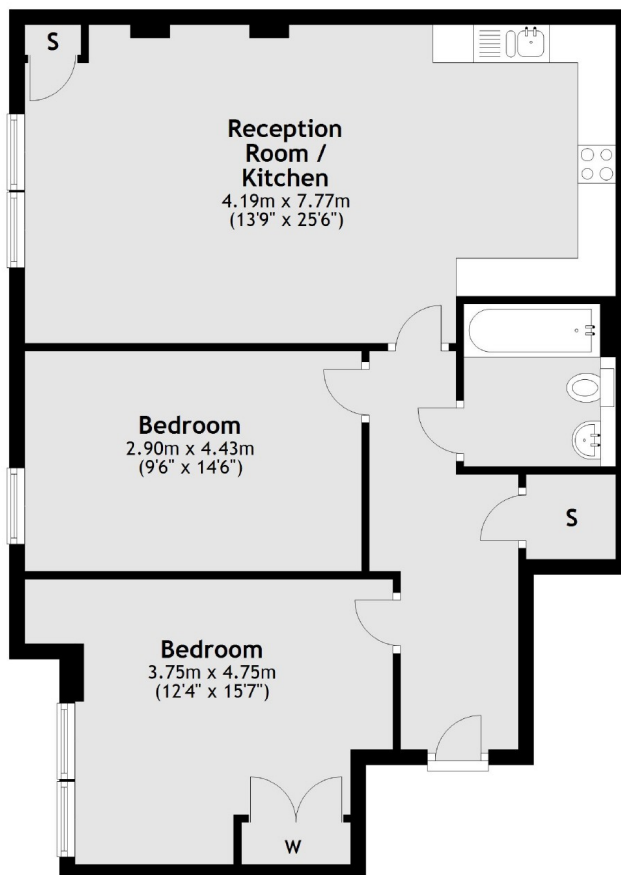
Burney House is located on a residential street tucked away off Streatham Hill and is within easy reach of Streatham High Road where you can find a vast array of shops, bars and restaurants. Streatham Hill train station offers links to London Victoria via Clapham Junction.

Features

- Sought After Development
- Excellent Condition
- Open Plan Kitchen/Reception
- Two Double Bedrooms
- Modern Bathroom/WC
- Convenient Location

Ardwell Road, London, SW2

Third Floor



Total area: approx. 75.4 sq. metres (811.5 sq. feet)