



Stanthorpe Road, SW16

£270,000

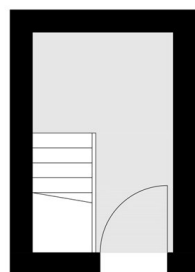
At just over 560sqft is this top floor, split-level, one double bedroom flat with separate kitchen. There is a spacious reception, modern bathroom and eaves storage. The property is also being offered to the market with no onward chain.

Stanthorpe Road is perfectly placed to take advantage of Streatham Station providing rail links into London Bridge and Blackfriars and Streatham High Road for its shopping, leisure facilities and restaurants.

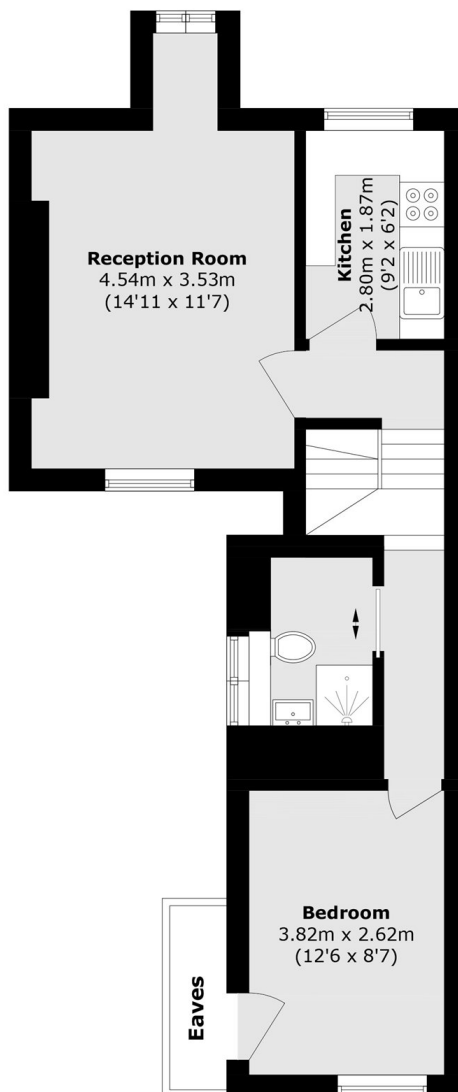
Features

- Chain Free
- Separate Kitchen
- Top Floor Flat
- Close to Station
- One Double Bedroom
- Eaves Storage

Stanthorpe Road, London, SW16



Ground Floor



First Floor

Total area (approx.): 52.3 sq. m (562.9 sq. ft)