



Lynette Avenue, SW4
£950,000

Dexters



Lynette Avenue, SW4

A beautifully presented two double bedroom, two bathroom period conversion flat with private garden located in the sought after Abbeville Village.

The property occupies the ground floor of a very pretty red brick terrace which has been converted into two flats. To the front of the property is the principal suite which has built in wardrobes and period style window shutters. The second bedroom, which is also a good size double benefits from an en suite shower room. Further down the hall is the main family bathroom.

To the back of the property is a stunning open plan reception room not far off 30ft in length. There is a shaker style fully fitted kitchen with a range of appliances, marble worktops as well as a large feature island. The living area is by the sliding doors which provide access onto the patio garden.

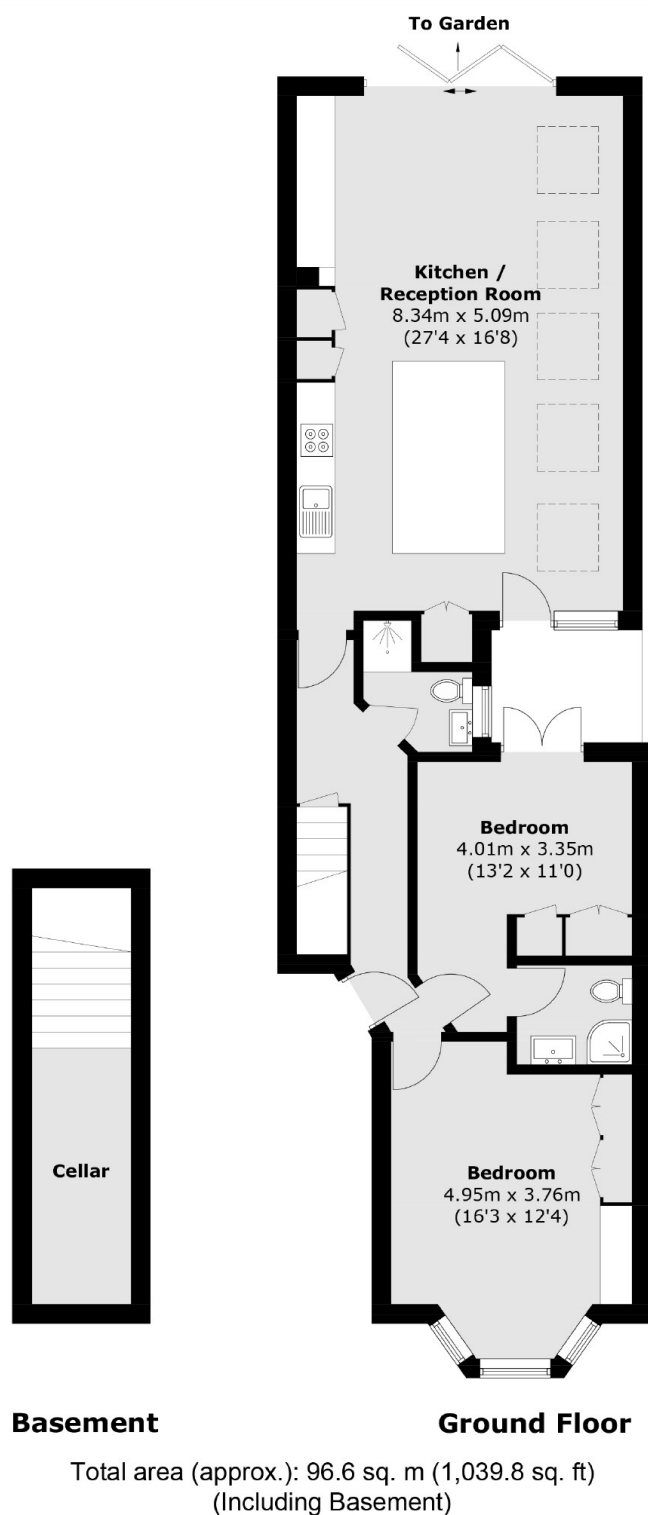
Lynette Avenue is a charming residential street situated just off Clapham Common, offering a perfect blend of green space and urban convenience. It leads towards the vibrant Abbeville Road, celebrated for its strong sense of community, welcoming local pub, and a range of independent shops and eateries. Excellent transport links are close at hand, with Clapham South Underground Station just a short walk away, providing swift access to Central London via the Northern Line.

Features

- Over 1000 sq ft
- Open Plan Reception
- Two Double Bedrooms
- Two Bathrooms
- Private Garden
- Just by Clapham Common



Lynette Avenue,
London, SW4



Dexters

Clapham Sales
28 Abbeville Road
London
SW4 9NG
Sales
020 8742 4140

Energy Rating: C. We aim to make our particulars both accurate and reliable. However they are not guaranteed; nor do they form part of an offer or contract. If you require clarification on any points then please contact us, especially if you're traveling some distance to view. Please note that appliances and heating systems have not been tested and therefore no warranties can be given as to their good working order.

RICS | Regulated
Estate Agent
and Letting Agent

dexters.co.uk