



## Elms Road, SW4

### £399,950

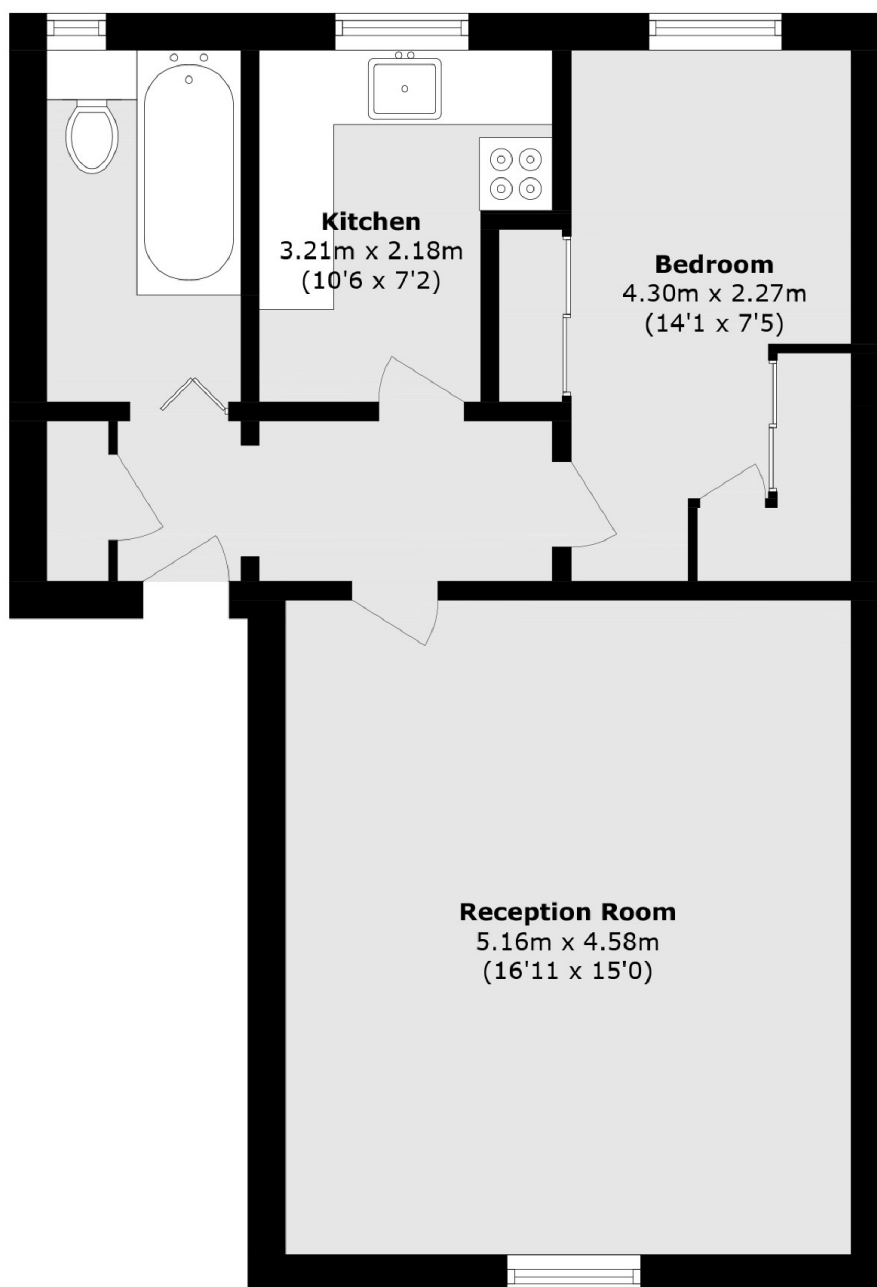
A spacious top floor Victorian conversion flat located on a popular road in the Abbeville Village with Clapham Common close by. The property compromises of a large living space with high ceilings, ample storage, a double bedroom with built in storage, a separate kitchen and a large bathroom.

Elms Road is a wide, tree-lined residential street, situated moments from Abbeville Village and equidistant between Clapham Common and Clapham South Northern Line Stations.

### Features

- Long lease
- Double Bedroom
- Communal Gardens
- Separate Kitchen
- Vast Living Space
- Parking

# Elms Road, London, SW4



Total area (approx.): 52.9 sq. m (569.4 sq. ft)

## Dexters

Clapham Sales  
28 Abbeville Road  
London  
SW4 9NG  
Sales  
020 8742 4140

Energy Rating: D. We aim to make our particulars both accurate and reliable. However they are not guaranteed; nor do they form part of an offer or contract. If you require clarification on any points then please contact us, especially if you're traveling some distance to view. Please note that appliances and heating systems have not been tested and therefore no warranties can be given as to their good working order.

 **RICS** | Regulated  
Estate Agent  
and Letting Agent

dexters.co.uk