



Fernbank Mews, SW12

£1,250,000

Dexters



Fernbank Mews, SW12

A beautifully presented three-storey family house set within a highly desirable private gated mews, offering over 1,400 sq ft of versatile living space.

The ground floor features a sleek, fully integrated kitchen with granite worktops, which opens into a bright conservatory-style dining area. French doors provide direct access to a pretty private garden, creating a seamless indoor-outdoor flow. This level also includes a separate utility room and a well-proportioned double bedroom, used by the owners as a second reception room. On the first floor, you'll find a generous double bedroom, a spacious reception room with built-in storage, and a modern family bathroom. The second floor boasts a substantial principal bedroom with an en-suite shower room, along with an additional double bedroom perfect for family, guests, or home office use. The property has the additional benefit of a private parking within a carport, a rare bonus.

Fernbank Mews is a private gated mews situated within a short walk of the Abbeville Village, Balham Hill & Nightingale Lane providing an abundance of vibrant cafes, wide range of bars, restaurants and boutiques. The green expanse of Clapham Common and Clapham South Underground station are located within moments of the property providing direct links to the City and the West End (Zone 2).

Features

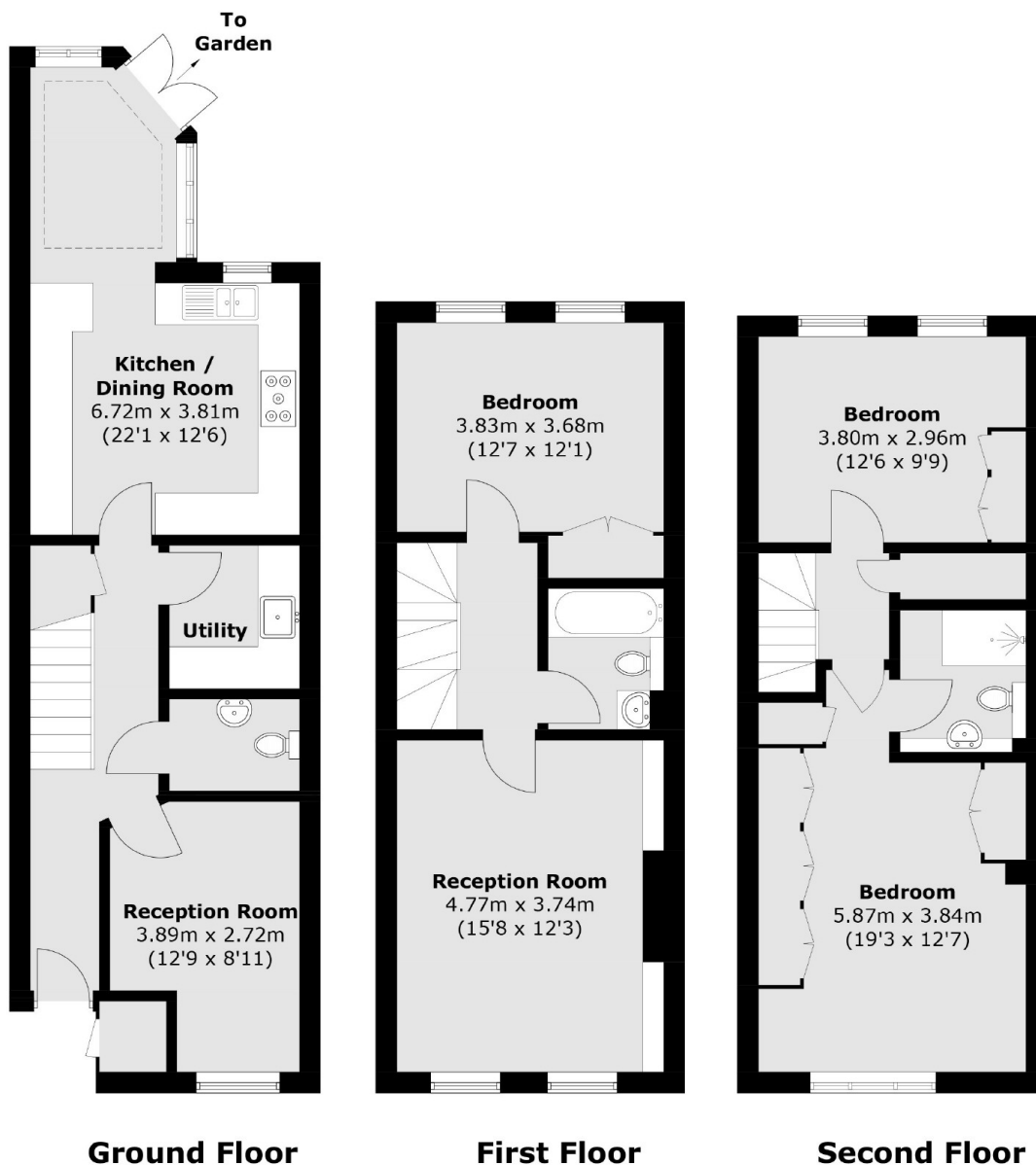
- Freehold
- Private Gated Mews
- Four double bedrooms
- Family Bathroom & En Suite
- Private off street parking
- Chain Free







Fernbank Mews, London, SW12



Total area (approx.) 130.4 sq. m (1,403.9 sq. ft) Including External Cupboard
External Cupboard area (approx.): 1.0 sq. m (11.0 sq.ft)

Dexters

Clapham Sales
28 Abbeville Road
London
SW4 9NG
Sales
020 8742 4140

Energy Rating: C. We aim to make our particulars both accurate and reliable. However they are not guaranteed; nor do they form part of an offer or contract. If you require clarification on any points then please contact us, especially if you're traveling some distance to view. Please note that appliances and heating systems have not been tested and therefore no warranties can be given as to their good working order.

 **RICS** | Regulated
Estate Agent
and Letting Agent

dexters.co.uk