



**Lyham Road, SW2**

**£1,200,000**

**Dexters**



## Lyham Road, SW2

An extremely unique and architecturally impressive apartment extending to a vast 1,799 sq.ft over two floors within the desirable Park Lofts development - a converted Victorian Schoolhouse set within gated, landscaped grounds.

Following an extensive redesign and scrupulous renovation, the property effortlessly blends fluid living and entertaining spaces with a functional design.

The accommodation is configured around an expansive double-height, open-plan reception room, comprising comfortable seating and dining areas with a bespoke kitchen featuring a range of attractive wall and base units with integrated appliances. A double bedroom and a contemporary shower room complete the ground floor. A handcrafted oak staircase ascends to the mezzanine-level principal bedroom, complete with an extensive bank of fitted wardrobes. The adjoining second mezzanine, which can also be accessed via its own staircase, houses a further bedroom, a family bathroom, and a bright workspace. The property also has secure, allocated off-street parking and a share of freehold.

Park Lofts is well located for the many local shops, restaurants and bars of the Abbeville Village. Clapham High Street & Clapham Common stations (Northern Line) are also just a short walk away.

### Features

- Split Level Apartment
- Open Plan Reception Room
- Three Bedrooms
- Private Entrance
- Secure Off Street Parking
- Share Of Freehold

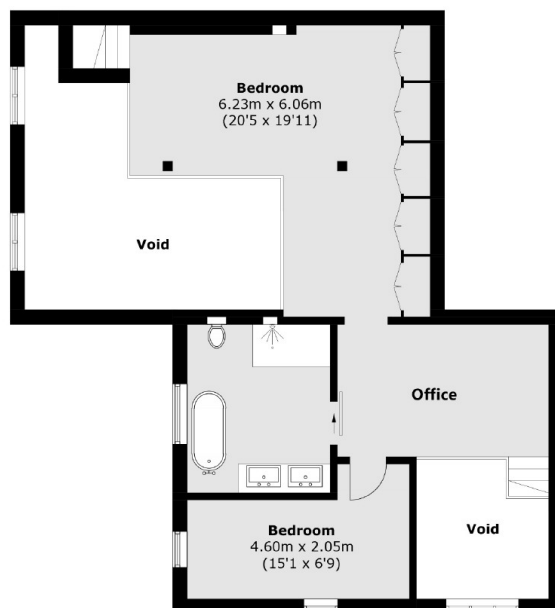




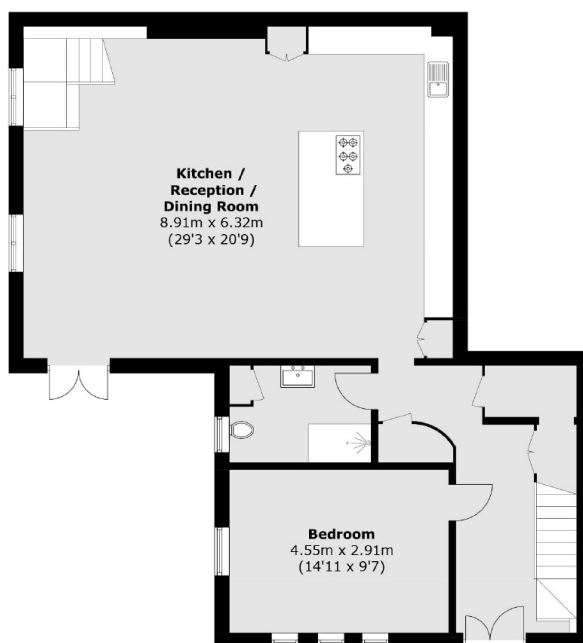




# Lyham Road, London, SW2



## Mezzanine



## First Floor

Total area (approx.): 167.3 sq.m (1,801 sq. ft)  
(Excluding Void)