

Glenelg Road, SW2

£700,000

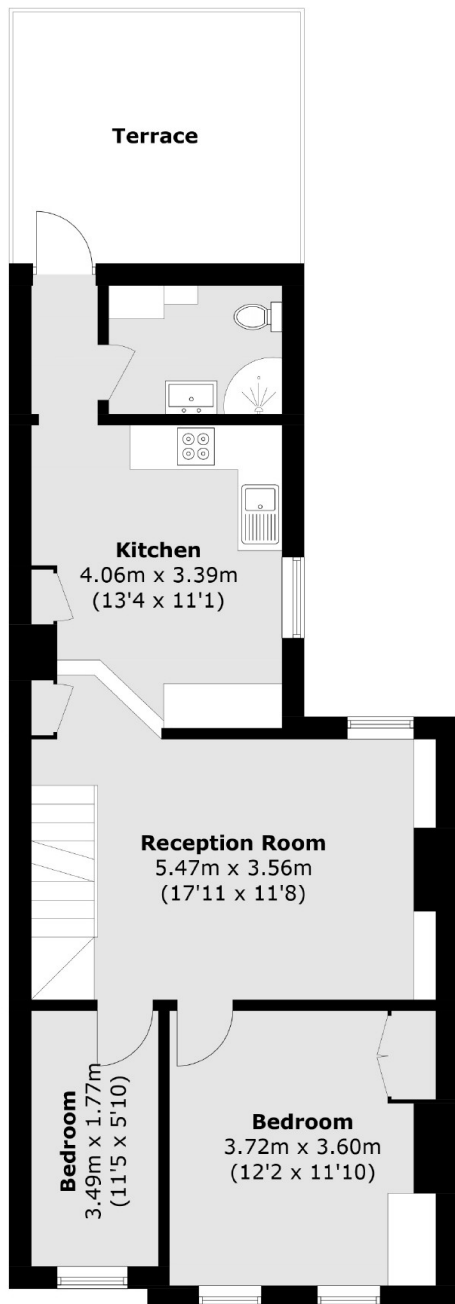
****Offers in excess of**** A three bedroom split level maisonette arranged over the top two floors of this Victorian building, The first floor compromises of of a large living room, two bedrooms, a bathroom and an open kitchen. The top floor has the master bedroom with a walk in wardrobe and a modern En suite bathroom, including a bath. The property has a private secluded roof terrace.

Glenelg Road is a quiet residential street within easy reach of Clapham and Brixton. Clapham Common/Clapham North (Northern Line) and Brixton (Victoria Line and National Rail) Underground Stations are within close proximity. Abbeville Village is also located a short walk away with many local shops, restaurants and cafés.

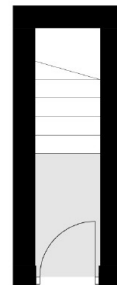
Features

- Maisonette
- Private roof terrace
- Three bedrooms
- En suite
- Share of Freehold
- Chain Free

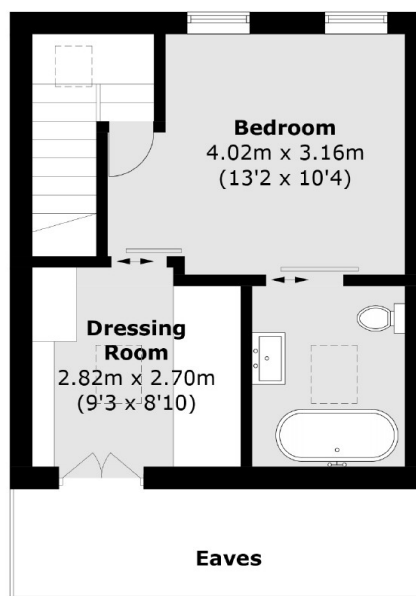
Glenelg Road, London, SW2



First Floor



Ground Floor



Second Floor

Total area (approx.): 93.6 sq. m (1,007.5 sq. ft)
Terrace: 13.2 sq. m (142.1 sq. ft)
(Excluding Eaves)