



## Branksome Road, SW2

### £899,950

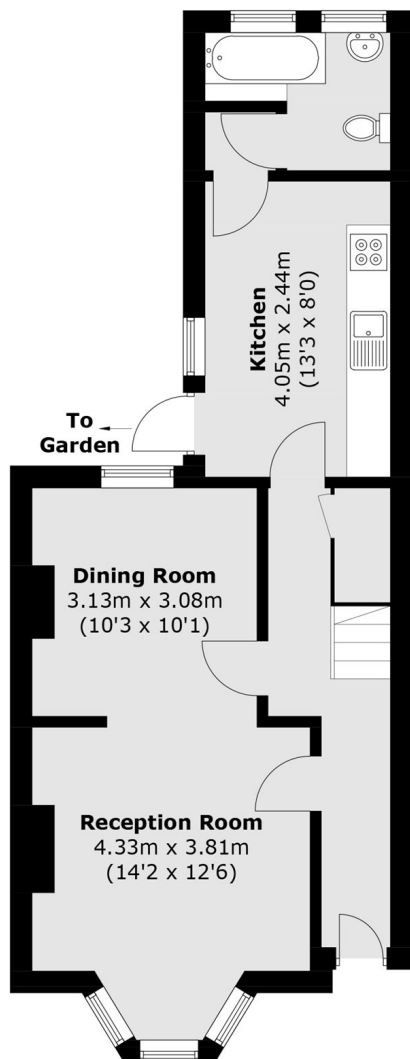
A mid terraced freehold home naturally arranged over three floors with a west facing garden. Comprising a double reception room with a bay window, a well equipped kitchen with ample room for dining, four double bedrooms and a family bathroom.

Branksome Road is well located for the many local shops, restaurants and bars of the Abbeville Village. Central Clapham and central Brixton are within close proximity along with their respective Northern line & Victoria Line stations.

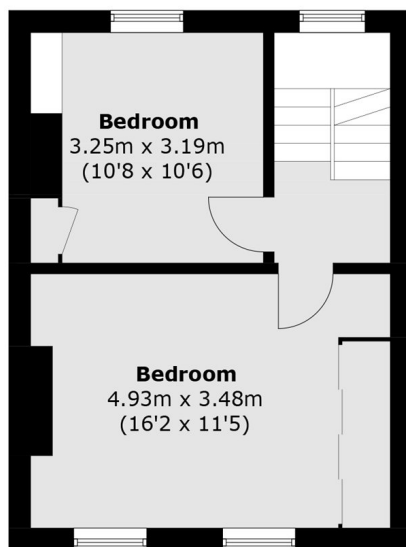
### Features

- Freehold
- Double Reception Room
- Four Bedrooms
- Large Garden
- Chain Free
- Superb Location

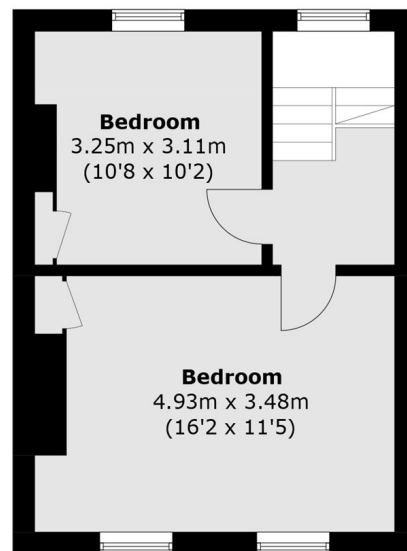
# Branksome Road, London, SW2



**Ground Floor**



**First Floor**



**Second Floor**

Total area (approx.): 116.9 sq. m (1258.3 sq. ft)