



Lessar Avenue, SW4

£725,000

This attractive first-floor period conversion is situated on a highly sought-after street running from Clapham Common South Side. The property extends to a generous 727 sq.ft and is superbly presented throughout with excellent proportions in all rooms and a fantastic feeling of space and light.

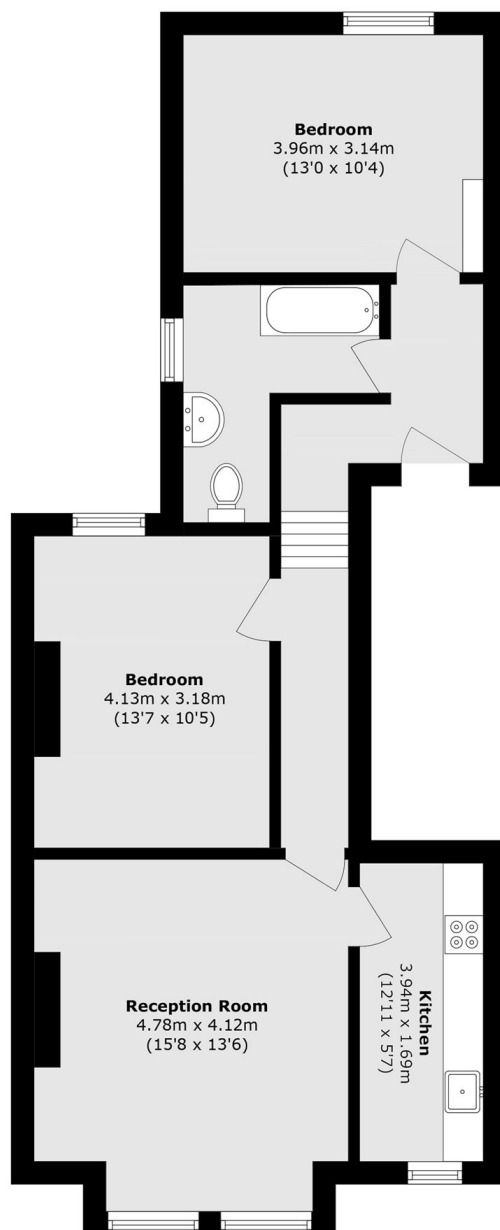
Comprising a spacious reception room with a large bay window, fireplace, bespoke cabinetry and book shelves, a separate well equipped kitchen, two double bedrooms and a bathroom. Offered to the market with a share of Freehold.

Lessar Avenue is located within the extremely desirable Abbeville Village, an area renowned for its array of shops, bars and restaurants which are only a 2-minute walk away. Clapham South Station (Northern Line) is also conveniently located just a 3-minute walk away.

Features

- Period Conversion
- Large Reception Room
- Separate Kitchen
- Two Double Bedrooms
- Share Of Freehold
- Superb Location

Lessar Avenue, London, SW4



Total area (approx.): 67.6 sq. m (727.6 sq. ft)

Dexters

Clapham Sales
28 Abbeville Road
London
SW4 9NG
Sales
020 8742 4140

Energy Rating: . We aim to make our particulars both accurate and reliable. However they are not guaranteed; nor do they form part of an offer or contract. If you require clarification on any points then please contact us, especially if you're traveling some distance to view. Please note that appliances and heating systems have not been tested and therefore no warranties can be given as to their good working order.

 **RICS** | Regulated
Estate Agent
and Letting Agent

[dexters.co.uk](https://www.dexters.co.uk)