



Abberville Road, SW4
£2,000,000

Dexters



Abbeville Road, SW4

This superb Victorian terraced home has been fully extended and meticulously refurbished to an exceptionally high standard to create a property both impressive and functional in equal measure.

The accommodation is arranged over three floors and makes a strong impression from the outset. The ground floor offers an elegant drawing room with a large bay window, bespoke alcove cabinetry and ornate ceiling coving, along with a utility room, cloakroom and an impressive kitchen/breakfast room. The kitchen has underfloor heating throughout and features a substantial island, a full range of integrated appliances including double ovens and a Quooker hot tap, generous dining space and a relaxed seating area. Floor-to-ceiling sliding doors open onto a larger-than-average, low-maintenance garden with two patios and an artificial lawn.

The first and second floors provide four double bedrooms and four bathrooms, including a principal suite with a spacious walk-through wardrobe leading to the en suite. Two additional bedrooms benefit from en suite bathrooms, complemented by a separate family bathroom.

Abbeville Road is a tree lined street moments from the many local shops, restaurants and cafés of Abbeville Village, with Clapham South & Common stations, along with the common itself just a short stroll away.

Features

Freehold House

Fully Extended & Refurbished

Four Bedrooms

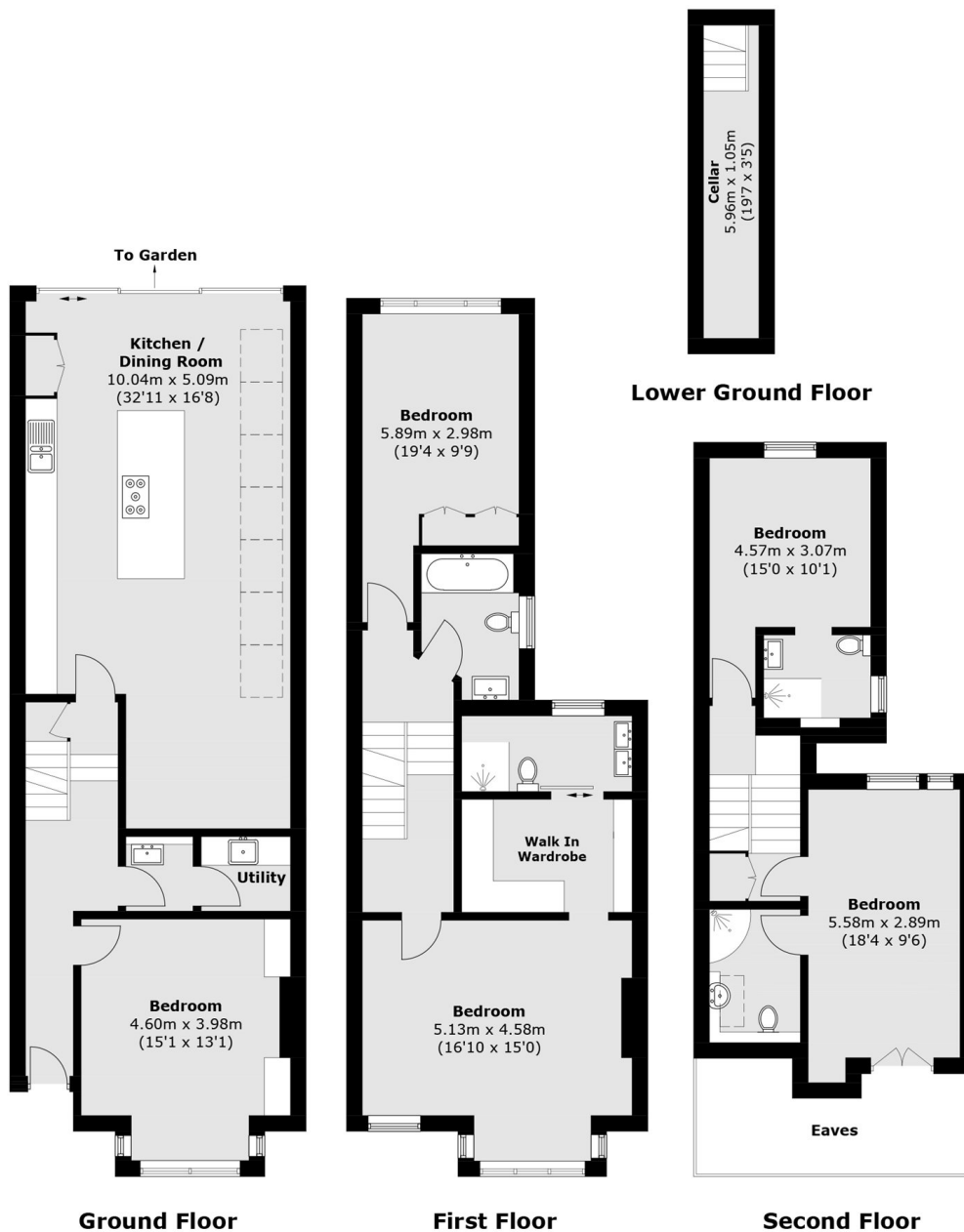
Four Bathrooms







Abbeville Road, London, SW4



Total area (approx.): 192.1 sq. m (2,067.8 sq. ft)
(Including Cellar / Excluding Eaves)