



## Brixton Hill, SW2

### £499,950

An impressive lateral period conversion extending to a generous 766 sq.ft, comprising a spacious reception room with hardwood floors and a feature fireplace, a separate well equipped kitchen breakfast room, two double bedrooms with fitted wardrobes and a bathroom.

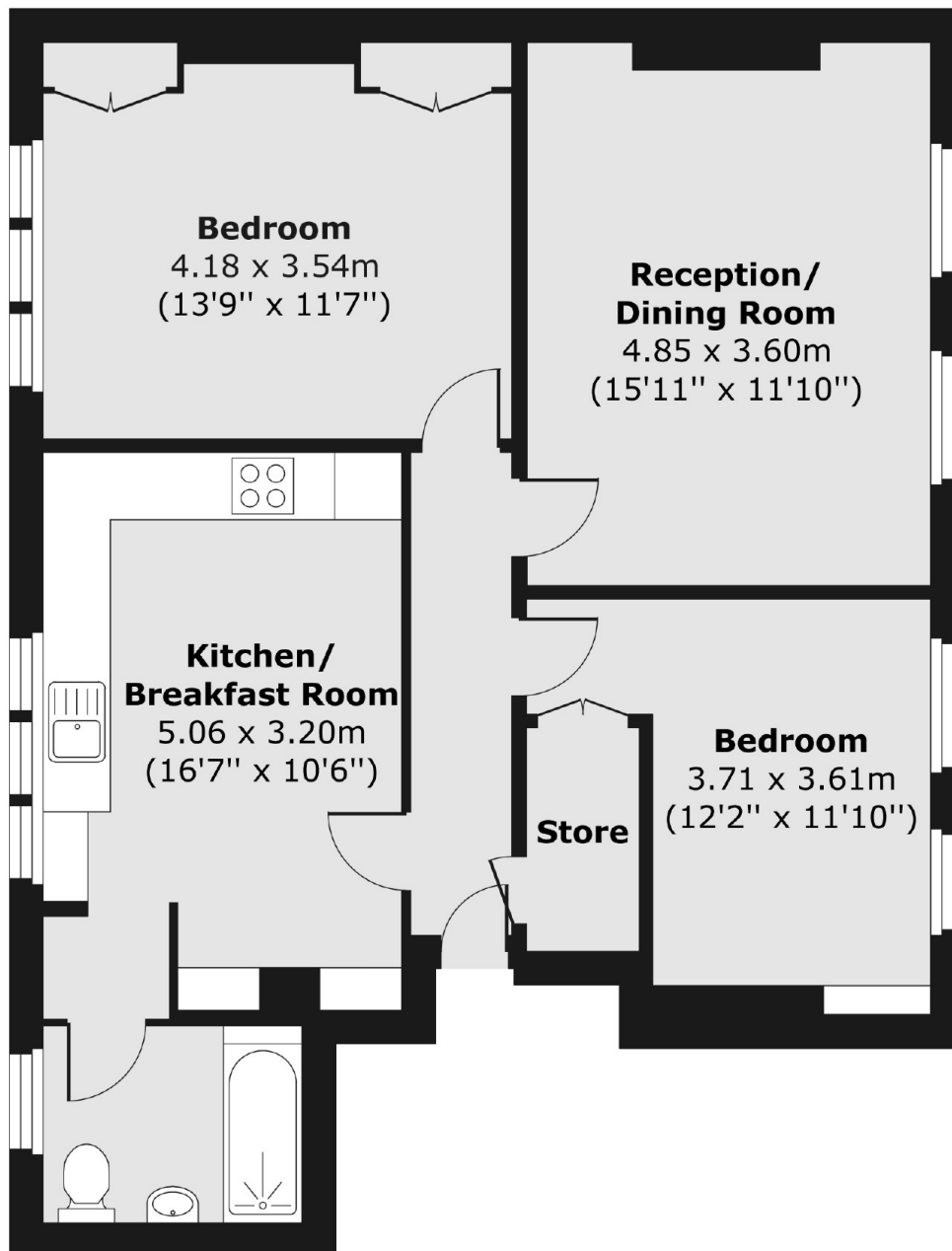
Brixton Hill provides easy access to central Brixton's many shops, bars and restaurants. Brixton station (Victoria Line) and Brockwell Park are just a short stroll away.

### Features

- Period Conversion
- Large Reception Room
- Kitchen/Breakfast Room
- Two Double Bedrooms
- Bathroom
- Superb Location

# Brixton Hill, London, SW2

## Second Floor



Total area (approx.) 71.18 sq. m (766 sq. ft)