



Cambridge Road, TW11  
£1,850,000

**Dexters**



## Cambridge Road, TW11

Set moments from Teddington High Street is this impressive semi-detached period family home. Offered with off street parking, two reception rooms and an open plan kitchen/dining room.

On the ground floor there are two large reception rooms, one with a beautiful fireplace and the other leading onto the modern open plan kitchen/dining room with patio doors out to the rear garden. Completing the ground floor is a downstairs W.C.

To the first floor there is a large double bedroom with en suite, two further double bedrooms, a shower room and separate W.C. On the top floor there is a generous master bedroom measuring 20ft with an en suite and Juliet balcony.

The property also offers off street parking, a beautiful secluded rear garden with a garden room at the end of it.

On the doorstep of Teddington High Street, Cambridge Road is perfect for anyone wanting easy access to all the local pubs and restaurants Teddington has to offer. Teddington train station is also very close by.

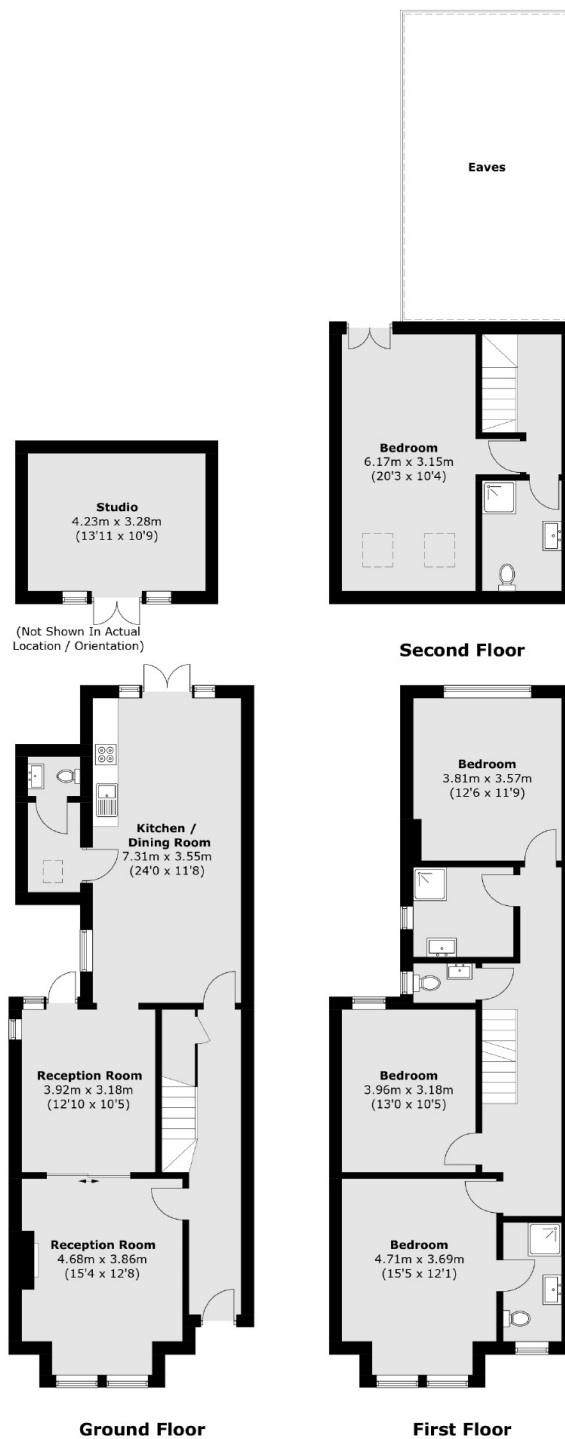
### Features

- Semi-Detached
- Four Double Bedrooms
- Three Bathrooms
- Central Teddington
- Off Street Parking
- Pretty Rear Garden





# Cambridge Road, Teddington, TW11



Total area (approx.): 177.1 sq. m (1,906.1 sq. ft)  
Studio: 14.2 sq. m (152.8 sq. ft)

## Dexters

Teddington  
61 High Street  
Teddington  
TW11 8HA  
Sales  
020 8288 8288

Energy Rating: D. We aim to make our particulars both accurate and reliable. However they are not guaranteed; nor do they form part of an offer or contract. If you require clarification on any points then please contact us, especially if you're traveling some distance to view. Please note that appliances and heating systems have not been tested and therefore no warranties can be given as to their good working order.

 **RICS** | Regulated  
Estate Agent  
and Letting Agent

[dexters.co.uk](https://www.dexters.co.uk)