



Trinder Mews, TW11
£375,000

Dexters



Trinder Mews, TW11

This modern semi-detached home is located in the heart of Teddington tucked away off the high street in a quiet cul-de-sac. It's immaculate presentation will allow you to move straight in.

Enter into the large reception room which then leads onto the kitchen. The kitchen is modern with integrated appliances. In addition, there is a downstairs toilet completing the ground floor.

There is a large double bedroom to the first floor with a Juliet balcony and fitted wardrobes. Additionally there is a modern bathroom and large storage cupboard in the hallway.

Being situated off Teddington High Street is an enviable location in the heart of Teddington with boutique shops, restaurants and bars. Bus links, close to Teddington station and the river Thames; everything you could want is on your doorstep.

Features

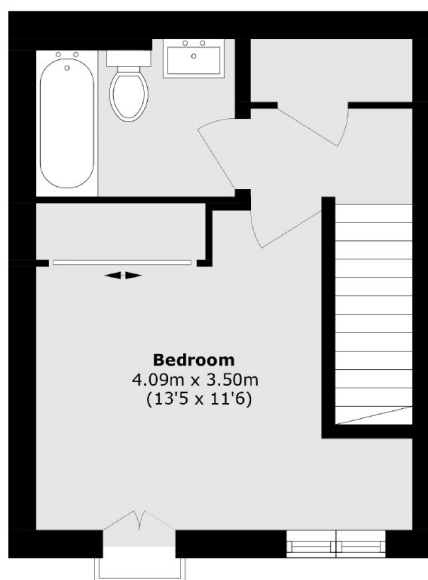
- One Bedroom House
- Allocated Parking
- Downstairs WC
- No Onward Chain
- Excellent Location
- Private Mews



Trinder Mews, Teddington, TW11



Ground Floor



First Floor

Total area (approx.): 43.8 sq. m (471.4 sq. ft)