



## Walpole Road, TW11

£199,950

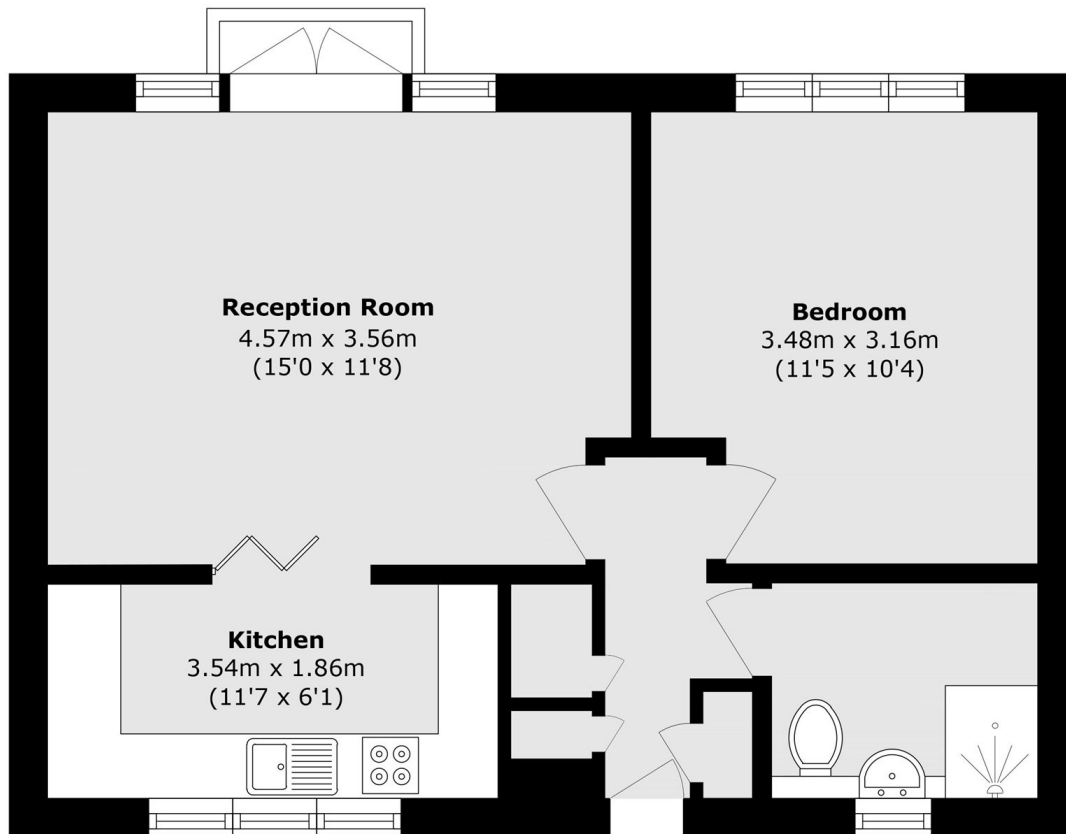
This well presented one bedroom retirement apartment is perfectly positioned in the centre of Teddington. Designed to help residents feel relaxed, independent and secure, this well kept development provides quality living paired with on-site facilities and a lovely communal garden.

Waterhouse Court is located at the end of Walpole Road which is situated in the centre of Teddington, close to Teddington station and Teddington's Broad Street with its array of shops and restaurants.

### Features

- Central Location
- One Bedroom
- Communal Gardens
- Retirement Development
- Secure Entry System
- On-site Residents Lounge

Walpole Road,  
Teddington, TW11



Total area (approx.): 41.9 sq. m (451.0 sq. ft)

**Dexters**

Teddington  
61 High Street  
Teddington  
TW11 8HA  
Sales  
020 8288 8288

Energy Rating: C. We aim to make our particulars both accurate and reliable. However they are not guaranteed; nor do they form part of an offer or contract. If you require clarification on any points then please contact us, especially if you're traveling some distance to view. Please note that appliances and heating systems have not been tested and therefore no warranties can be given as to their good working order.

**RICS** | Regulated  
Estate Agent  
and Letting Agent

[dexters.co.uk](https://www.dexters.co.uk)