



Kingston Close, TW11

£2,650 Per calendar month

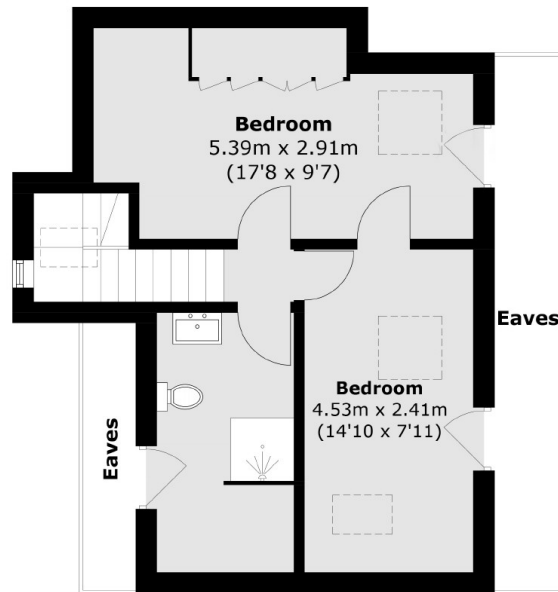
Set within a private close, within easy access to Teddington High Street, is this newly decorated large three bedroom maisonette, that has two reception rooms, is modern throughout with two bathrooms and has a private garden and parking.

Kingston Close is just off Cromwell Road and within easy reach of Teddington high street and mainline station. Bushy Park, the River Thames and Kingston town centre are all close by.

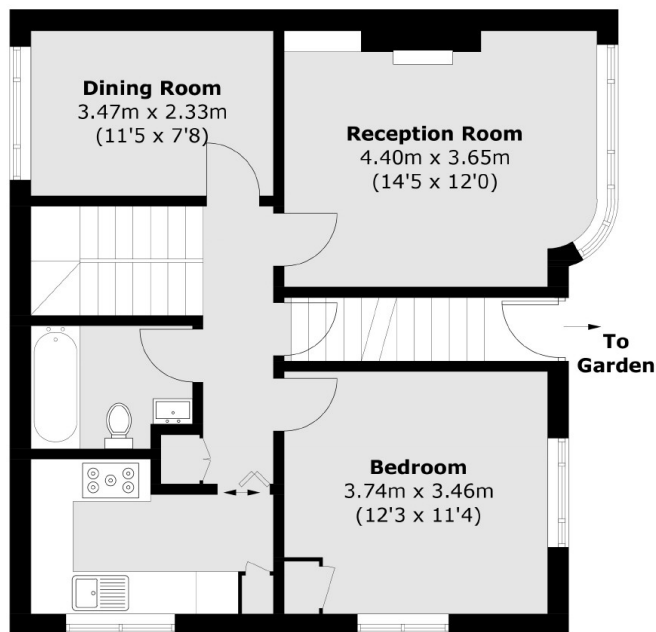
Features

- Three Double Bedrooms
- Two Reception Rooms
- Separate Modern Kitchen
- New Carpets Throughout
- Private Garden
- Communal Gardens

Kingston Close, Teddington, TW11



Second Floor



First Floor

Total area (approx.): 102.0 sq. m (1,097.9 sq. ft)
(Excluding Eaves)