



Manor Road, TW11

£2,500 Per calendar month

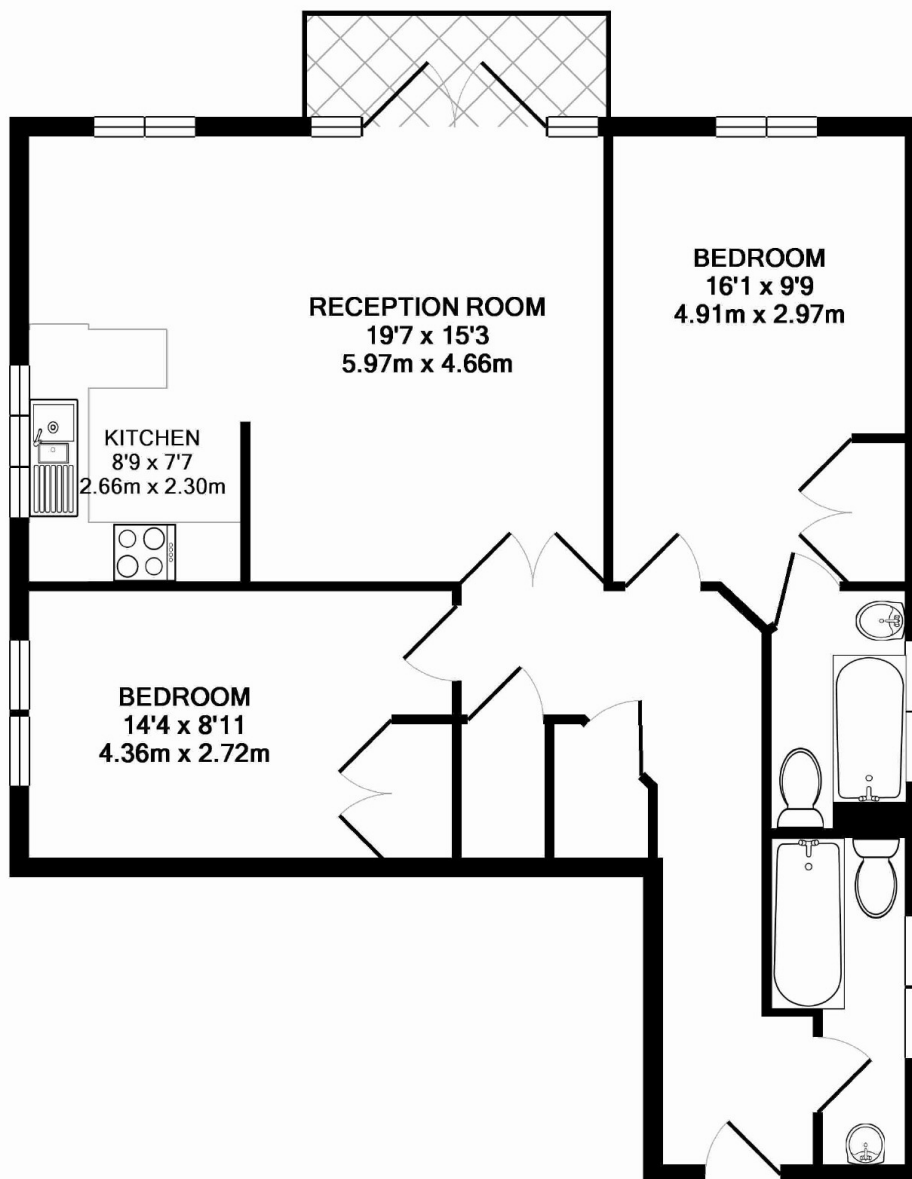
Riverside living at it's finest! With views of the Thames from the private balcony. This two double bedroom apartment has over 800sq ft of accommodation with two bathrooms and allocated parking.

On the banks of the River Thames, The Anglers pub or fine dining at The Wharf on your doorstep and less than a mile to Teddington High Street this flat has a location for all to enjoy.

Features

Riverside Apartment
Two Double Bedrooms
Two Bathrooms
River View Balcony
Allocated Parking
Unfurnished

Manor Road, Teddington, TW11



BOWATER HOUSE, TW11 TOTAL APPROX. FLOOR AREA 819 SQ.FT. (76.1 SQ.M.)

All measurements taken to RICS Guidelines for Gross Internal Area. Whilst every attempt has been made to ensure the accuracy of the floor plan contained here, all measurements are approximate and no responsibility is taken for any error, omission or misstatement. This plan is for illustrative purposes only and should be used as such by any prospective purchaser. The services, systems and appliances shown have not been tested and no guarantee as to their operability or efficiency can be given.

Made with Metropix ©2015

Dexters

Teddington
61 High Street
Teddington
TW11 8HA
Lettings
020 8288 2900

Energy Rating: C. We aim to make our particulars both accurate and reliable. However they are not guaranteed; nor do they form part of an offer or contract. If you require clarification on any points then please contact us, especially if you're traveling some distance to view. Please note that appliances and heating systems have not been tested and therefore no warranties can be given as to their good working order.

 **RICS** | Regulated
Estate Agent
and Letting Agent

dexters.co.uk