



Waldegrave Road, TW11
£1,250,000

Dexters



Waldegrave Road, TW11

This spacious semi-detached home is available with no onward chain and in good condition throughout. The flexible accommodation is arranged over two levels with five/six bedrooms and off street parking.

There is off street parking to the front of the house, the ground floor has a reception room which can be used as a bedroom and a shower room. The double reception and kitchen/breakfast room are perfect for entertaining.

The garden is laid to lawn with a patio area and there is a large garden room which has been used as an office or another reception room.

Waldegrave Road is close to Teddington town centre, excellent for transport by train or bus. Royal Bushy Park and The River Thames are easy to reach along with Teddington High Street.

Features

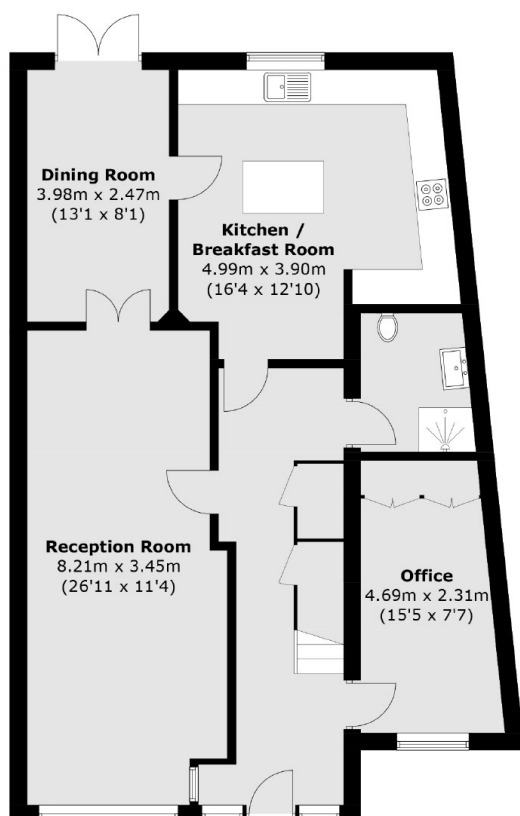
- No Onward Chain
- Off Street Parking
- Five/Six Bedrooms
- Two Bathrooms
- End Terrace
- Great School Catchment



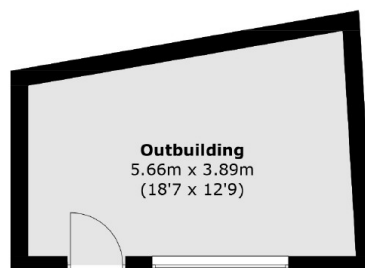




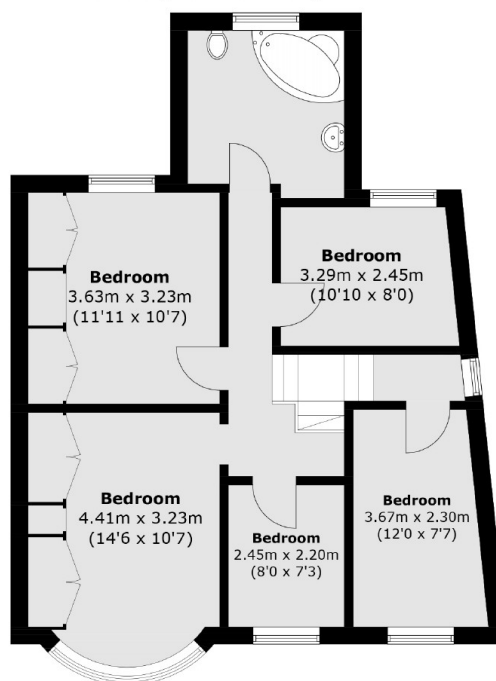
Waldegrave Road, Teddington, TW11



Ground Floor



**(Not Shown In Actual
Location / Orientation)**



First Floor

Total area (approx.): 159.9 sq. m (1,721.1 sq. ft)
Outbuilding (approx.): 19.1 sq. m (205.6 sq. ft)