



Anlaby Road, TW11

£2,095 Per calendar month

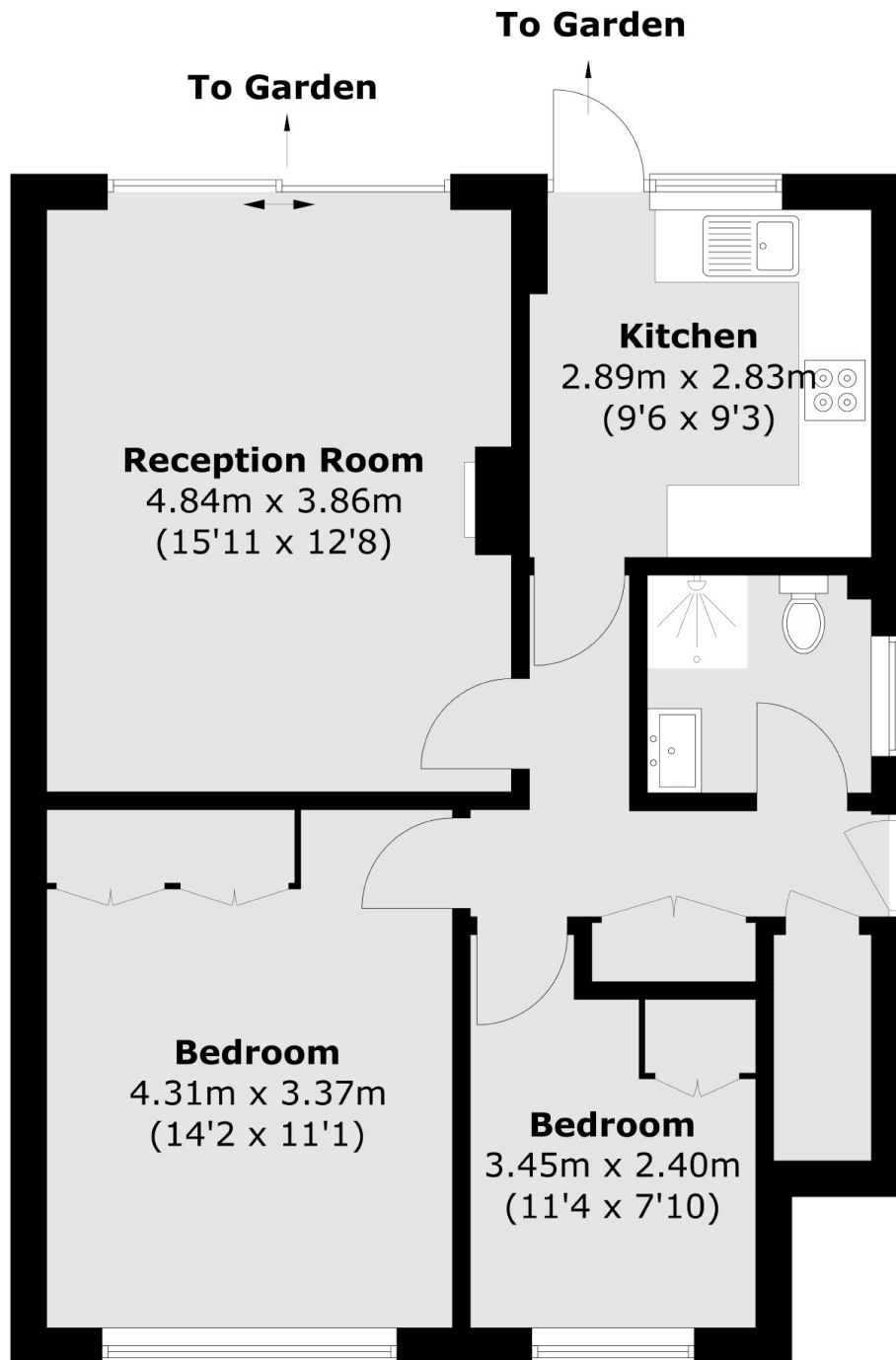
SINGLE OR PROFESSIONAL COUPLE ONLY Set in a popular location, is this two double bedroom flat presented in great condition throughout with a modern kitchen and direct access to a stunning private rear garden.

Anlaby Road is a tree lined road and runs between Hampton Road and Stanley Road. Teddington High Street, the River Thames and Teddington train station are all within a short walk.

Features

- Ground Floor Apartment
- Modern Kitchen
- Two Double Bedrooms
- Ample Storage
- Large Private Rear Garden
- Great Location

Anlaby Road, Teddington, TW11



Total area (approx.): 63.0 sq. m (678.1 sq. ft)

Dexters

Teddington
61 High Street
Teddington
TW11 8HA
Lettings
020 8288 2900

Energy Rating: . We aim to make our particulars both accurate and reliable. However they are not guaranteed; nor do they form part of an offer or contract. If you require clarification on any points then please contact us, especially if you're traveling some distance to view. Please note that appliances and heating systems have not been tested and therefore no warranties can be given as to their good working order.

 **RICS** | Regulated
Estate Agent
and Letting Agent

[dexters.co.uk](https://www.dexters.co.uk)