



## Waldegrave Road, TW11

£899,950

This wonderful period family home is presented in immaculate condition and offers a large double reception room, two double bedrooms, and a large rear garden.

Waldegrave Road is a turning off Teddington High Street with plenty of shops/bars and restaurants. A great position if you need transport links with Teddington mainline station close by and plenty of bus routes.

### Features

- Period Family Home
- Newly Refurbished
- Large Rear Garden
- Two Double Bedrooms
- Double Reception Room
- Central Location

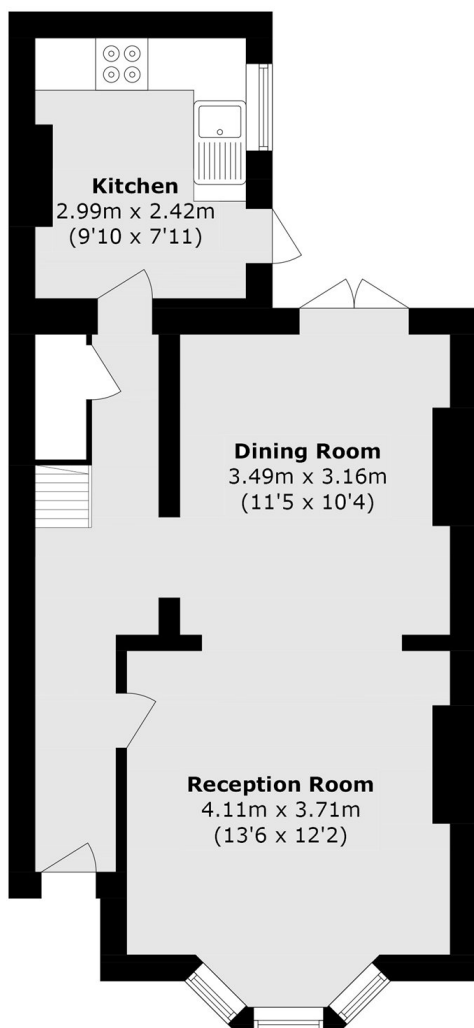


**Waldegrave Road, TW11**

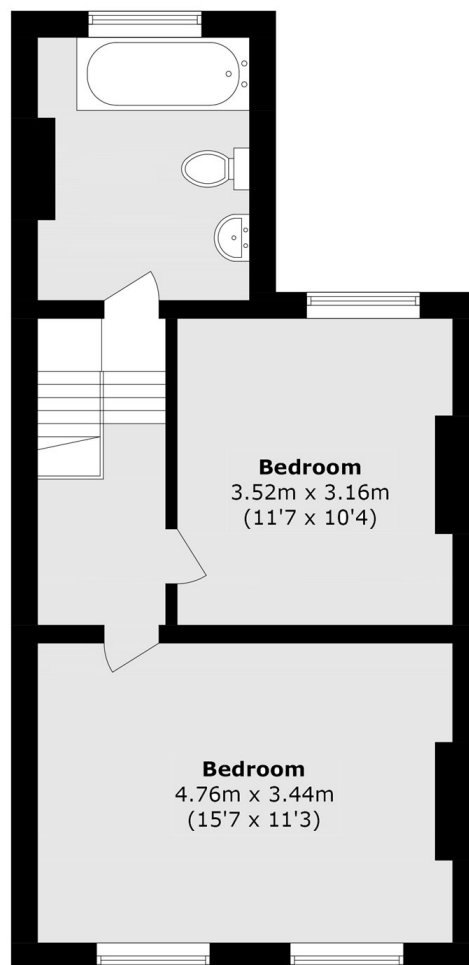




# Waldegrave Road, Teddington, TW11



**Ground Floor**



**First Floor**

Total area (approx.): 83.9 sq. m (903.0 sq. ft)