



## Park Lane, TW11

### £289,950

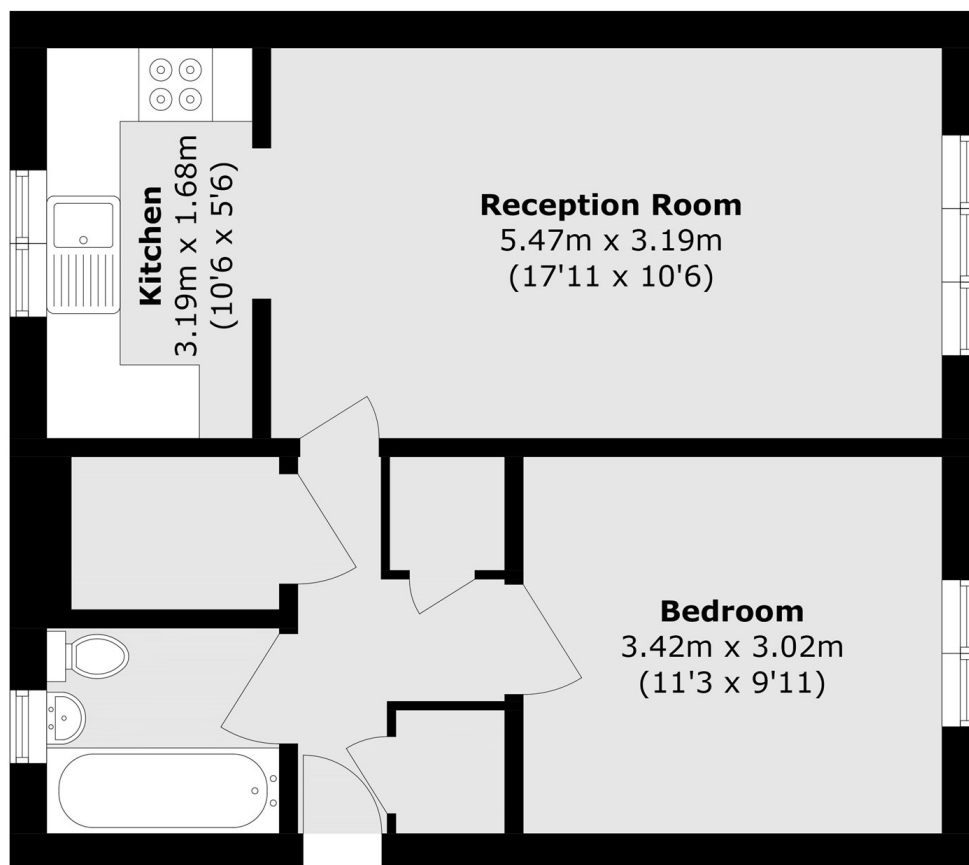
This spacious one double bedroom apartment is offered with no onward chain and located in the heart of Teddington. The property offers unallocated parking with communal grounds and is the perfect investment or first time purchase.

Park Lane is an excellent location, being within a 5 minute walk of Teddington mainline station and the shops, bars and restaurants of Teddington High Street and Broad Street, as well as within a 7 minute walk of Bushy Park.

### Features

- No Onward Chain
- One Double Bedroom
- Storage Cupboard
- Unallocated Parking
- Central Location
- Excellent Transport Links

# Park Lane, Teddington, TW11



Total area (approx.): 46.9 sq. m (504.8 sq. ft)