

## Montrose Avenue, TW2

£3,500 Per calendar month

This semi-detached four bedroom family home has been renovated to a very high standard. The property has three extremely stylish bath/shower rooms, a large double reception room, a modern kitchen, off-street parking, a garage and a large rear garden.

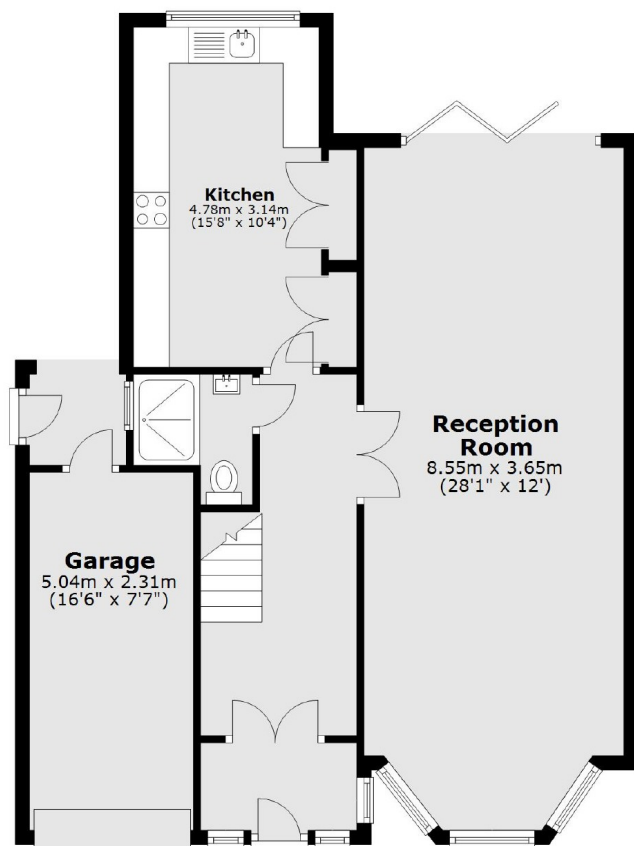
Montrose Avenue is perfectly positioned for Whitton high street and mainline train station with services into London Waterloo. A selection of excellent schools can also be found nearby.

### Features

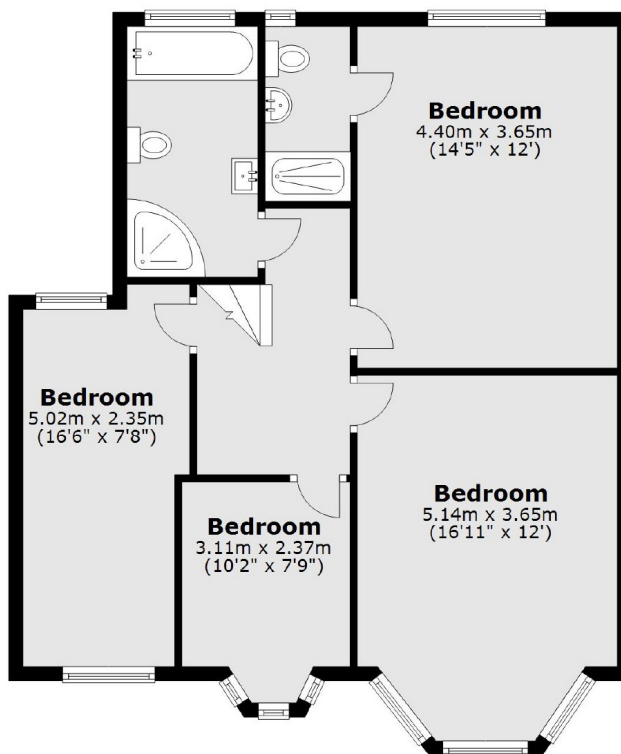
- Four Bedrooms
- Two Bathrooms
- Driveway
- Large Rear Garden
- Gold Detailing Throughout
- Garage

# Montrose Avenue, Whitton, TW2

**Ground Floor**



**First Floor**



Total area: approx. 148.2 sq. metres (1594.7 sq. feet)