



## Sherland Road, TW1

£2,750 Per calendar month

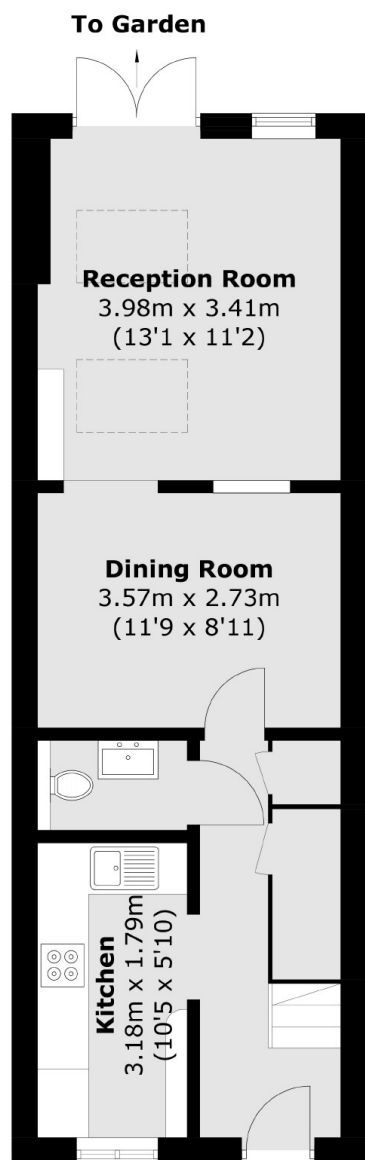
This impressive three bedroom Victorian family home is arranged over three floors and offers a through reception room with a downstairs WC, kitchen and a low maintenance patio garden.

Sherland Road is a highly desirable road, perfectly placed for all Twickenham amenities including shops, schools, restaurants and Twickenham train station with its 'fast' service into Waterloo.

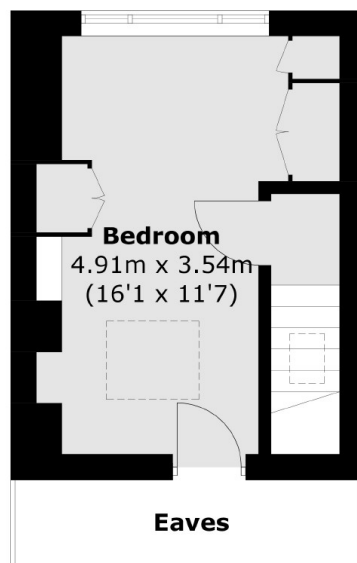
### Features

- Immaculately Presented
- Central Twickenham Location
- Three Bedrooms
- Two Bathrooms
- Private Garden
- Redecorated Throughout

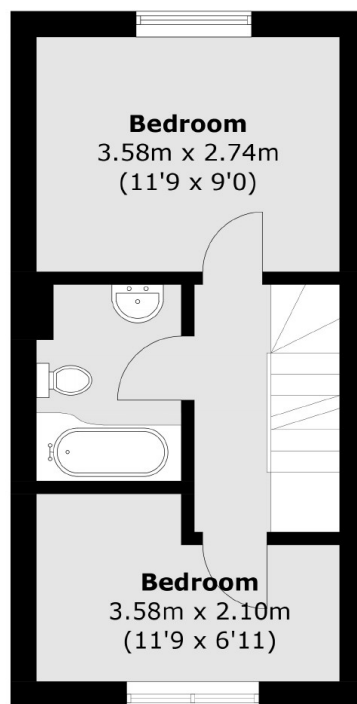
# Sherland Road, Twickenham, TW1



**Ground Floor**



**Second Floor**



**First Floor**

Total area (approx.): 86.2 sq. m (927.9 sq. ft)  
(Excluding Eaves)

## Dexters

Twickenham  
84 Heath Road  
Twickenham  
TW1 4BW

Lettings  
020 8744 2233

Energy Rating: C. We aim to make our particulars both accurate and reliable. However they are not guaranteed; nor do they form part of an offer or contract. If you require clarification on any points then please contact us, especially if you're traveling some distance to view. Please note that appliances and heating systems have not been tested and therefore no warranties can be given as to their good working order.

 **RICS** | Regulated  
Estate Agent  
and Letting Agent

dexters.co.uk