

Brewery Lane, TW1

£4,498 Per calendar month

This superb four-bedroom house is split over four floors, combining the classic elegance of a traditional London mews with the ultimate in modern living. The property is situated in a private gated development, featuring an open plan dining area, private garden and two allocated parking spaces.

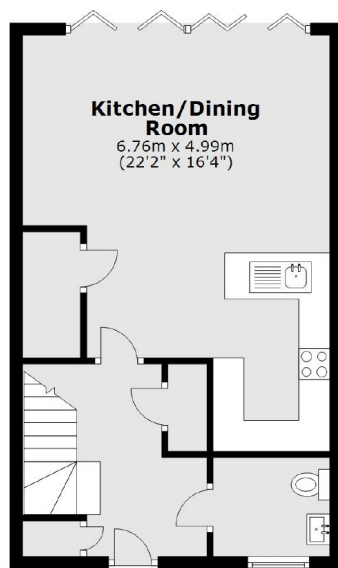
This private development was built by the award-winning developers, St. James. Brewery Lane is ideally located moments from Twickenham Station as well as offering a vast selection of shops, cafes and restaurants. The iconic Twickenham Rugby Stadium is moments away which features a Virgin Active Health Club.

Features

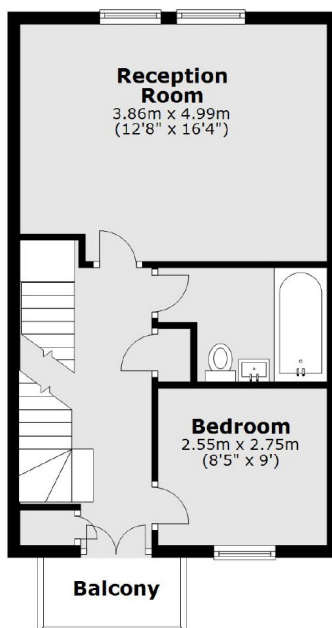
- Four Bedroom Town House
- Gated Development
- Furnished Or Unfurnished
- Three Bathrooms
- Private Allocated Parking
- Close To Station

Brewery Lane, Twickenham, TW1

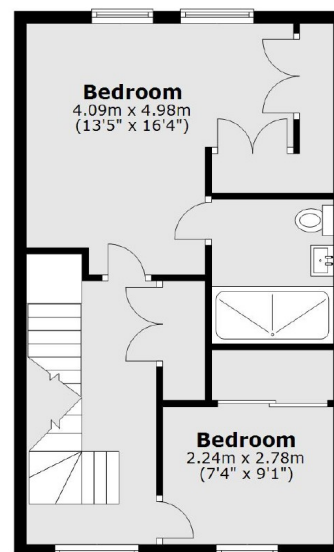
Ground Floor



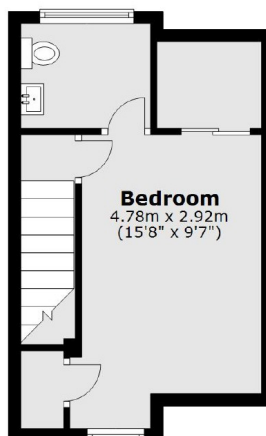
First Floor



Second Floor



Third Floor



Total area: approx. 151.0 sq. metres (1625.6 sq. feet)