



Nelson Road, TW2

£649,995

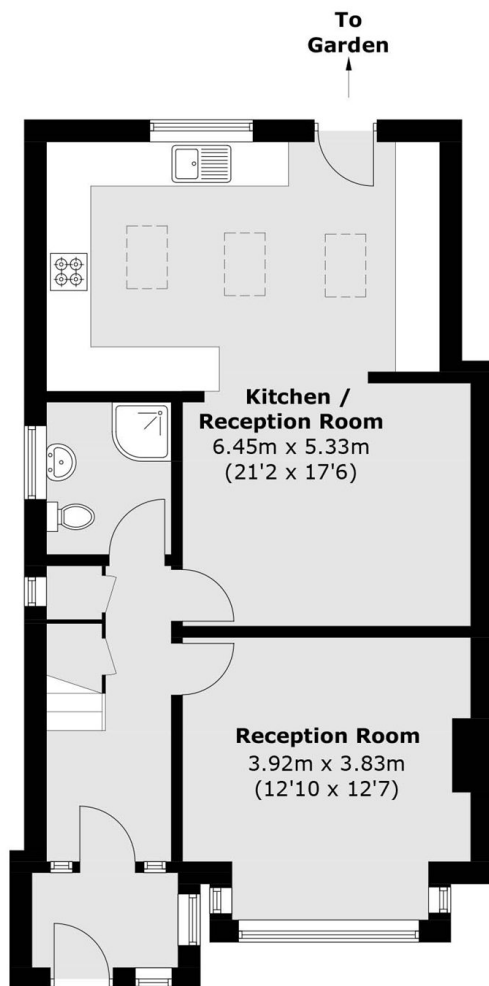
Offered with no onward chain is this spacious four bedroom 1930s semi detached house that would be a wonderful family home for years to come. Benefits include three bath / shower rooms, a downstairs W.C and off street parking.

Nelson Road is situated just off Whitton high street where you will find a vast array of shops, pubs, and cafés including independent coffee shops and bakeries as well as Starbucks. The area is also ideal for commuters as there is a fast link to London Waterloo via the mainline station and there are also a number of good schools nearby.

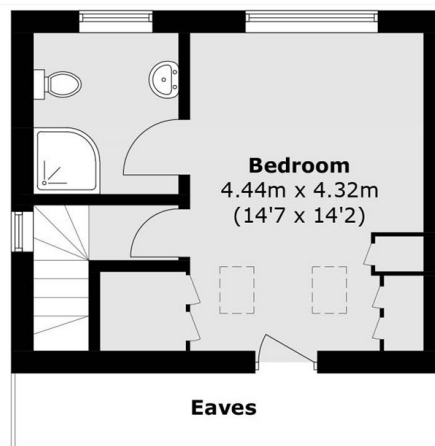
Features

- Four Bedrooms
- Three Bath / Shower Rooms
- Downstairs W.C
- Off Street Parking Space
- No Onward Chain
- Good Condition

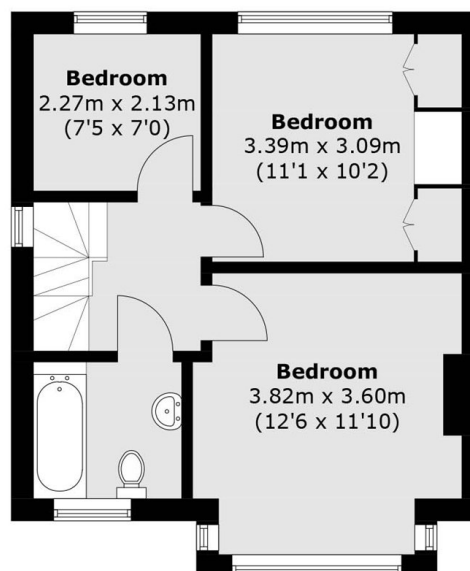
Nelson Road, Whitton, TW2



Ground Floor



Second Floor



First Floor

Total area (approx.): 121.4 sq. m (1,306.8 sq. ft)
(Excluding Eaves)