



Whitton Way, TW3

£650,000

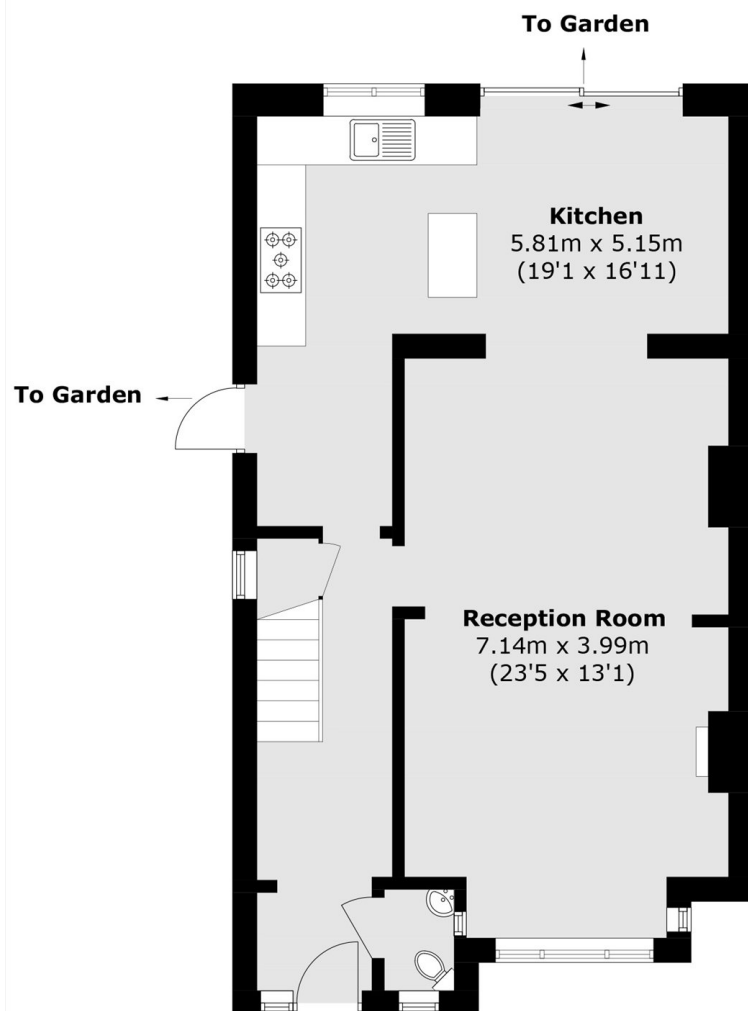
An ideally located property set over two floors with the ground floor offering a large open plan lounge and dining room leading onto a private garden, a smart good size kitchen with fitted appliances. To the first floor there are three good size double bedrooms, with newly fitted carpet throughout and a three piece bathroom suite.

Whitton Way is located for easy access to Whitton Rail Station, Twickenham, St Margarets, Chiswick and Richmond.

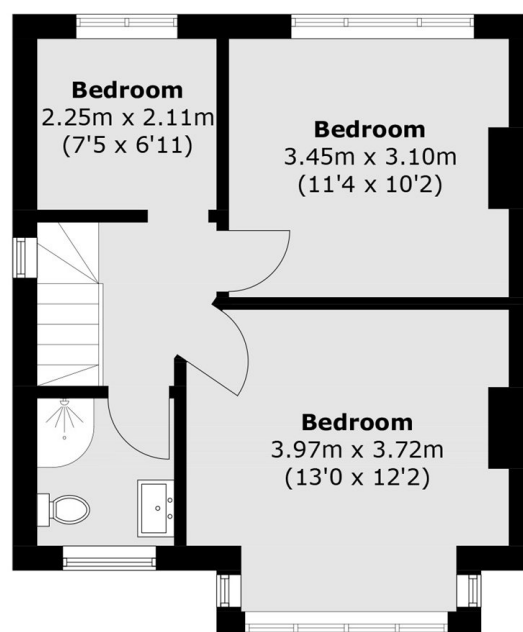
Features

- Three Bedrooms
- Off Street Parking
- Close To Local Amenities
- Bright/ Spacious Lounge
- Good Size Garden
- Family Home

Whitton Way, Hounslow, TW3



Ground Floor



First Floor

Total area (approx.): 99.2 sq. m (1,067.7 sq. ft)