



## Whitton Road, TW1

£3,500 Per calendar month

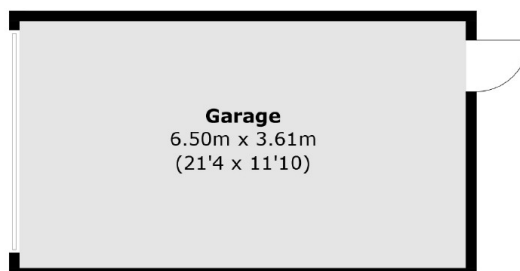
This characteristic three-bedroom family home set on a popular road in Twickenham, includes two reception rooms, separate kitchen with utility area and large American fridge/ freezer. Upstairs you have three bedrooms, larger than life modern bathroom and pretty front and back gardens. The house benefits from being moments away from the A316 which make its easy for commuting.

Whitton Road is wonderfully located close to Twickenham mainline station and Twickenham high street. There is also bus routes provide links into Richmond and Twickenham town centres.

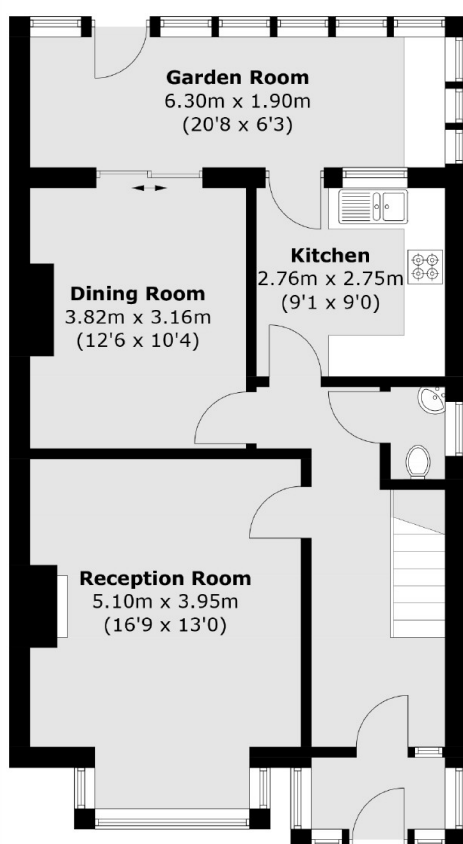
### Features

- Three Bedrooms
- Large Bathroom
- Double Glazing
- Ample Storage
- Period Features
- Front & Back Gardens

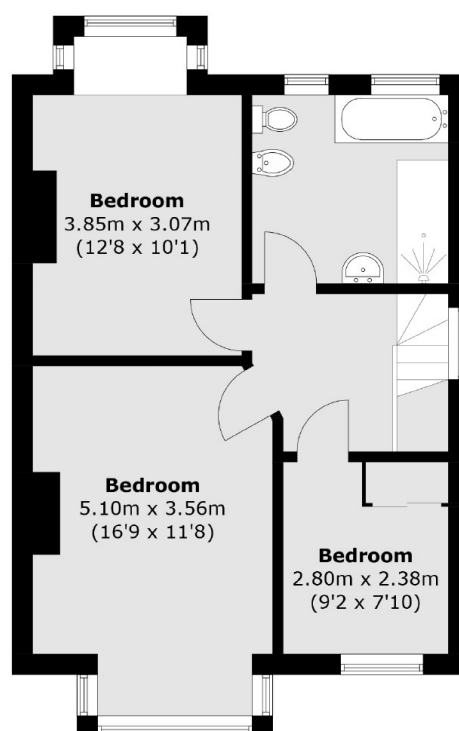
# Whitton Road, Twickenham, TW1



(Not Shown In Actual  
Location / Orientation)



**Ground Floor**



**First Floor**

Total area (approx.): 141.9 sq. m (1527.4 sq. ft)  
(Including Garage)