



Chudleigh Road, TW2

£325,000

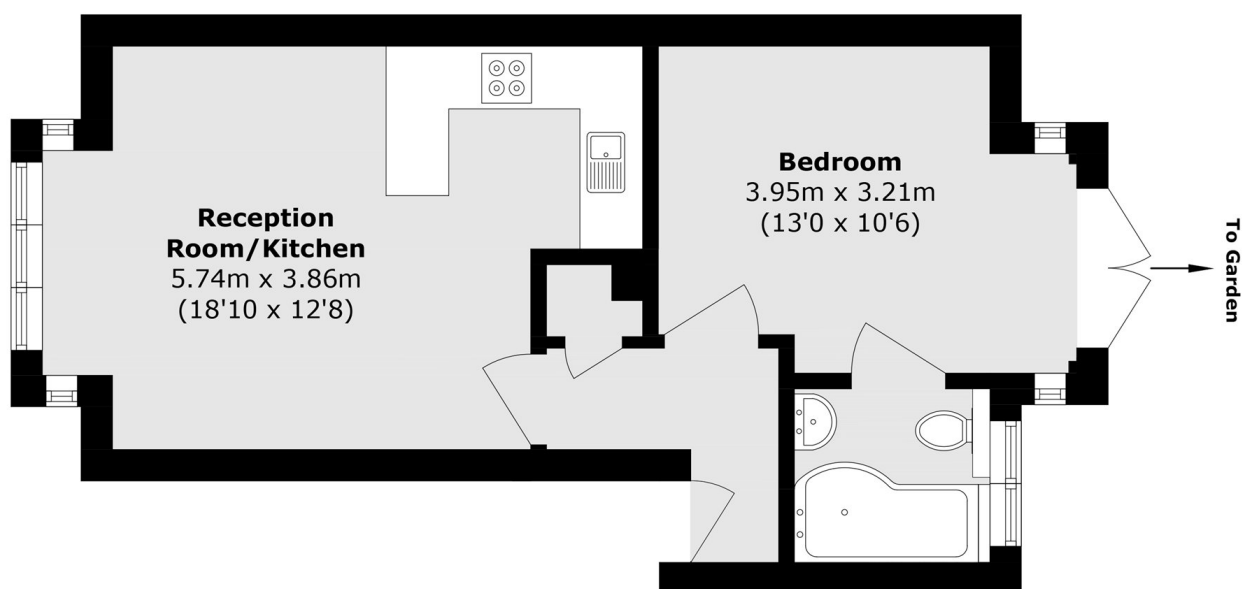
This one bedroom ground floor apartment has an open plan kitchen/living room, large double bedroom with en-suite bathroom and direct access onto a private rear garden.

Chudleigh Road is a quiet residential street in Twickenham, conveniently located close to local shops, schools, parks and excellent transport links into central London.

Features

- One Bedroom
- Ground Floor Flat
- Private Garden
- Central Location
- No Onward Chain
- Close To Twickenham Station

Chudleigh Road, Twickenham, TW2



Total area (approx.): 38.6 sq. m (415.4 sq. ft)