



## Bridge Way, TW2

£1,250,000

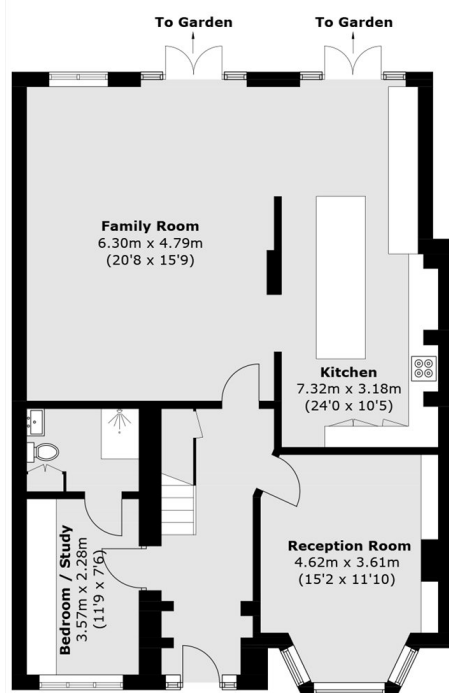
This impressive five-bedroom, three-bathroom house has flexible accommodation of just under 1900sq ft. There is a stylish open-plan kitchen/ family space, off-street parking, side access and a self-contained annex at the back of the large South West facing garden.

Bridge Way is a highly sought after road beside the town centre where you will find a selection of shops, café's and restaurants. Whitton mainline station has a fast link to London Waterloo which is just a few hundred yards away and there are also a number of good schools nearby.

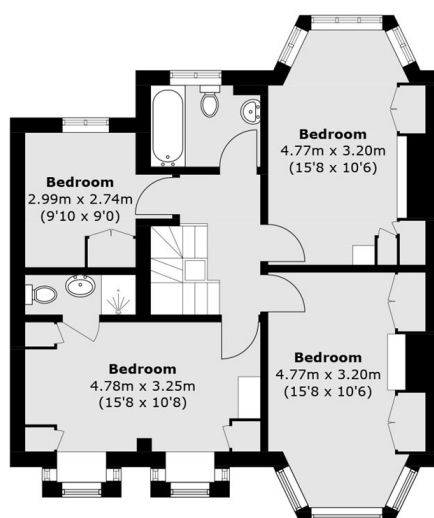
### Features

- Five Bedrooms
- Three Bathrooms
- Self Contained Annex
- South West Facing Garden
- Off Street Parking
- Side Access

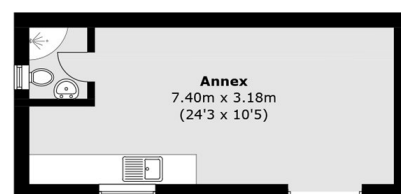
# Bridge Way, Whitton, TW2



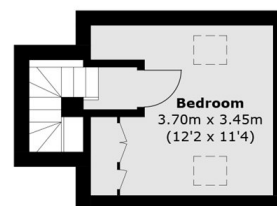
**Ground Floor**



**First Floor**



**Annex**  
(Not Shown In Actual  
Location / Orientation)



**Second Floor**

Total area (approx.): 175.6 sq. m (1,890.1 sq. ft)  
Annex: 23.7 sq. m (255.1 sq. ft)

## Dexters

Twickenham  
84 Heath Road  
Twickenham  
TW1 4BW

Sales  
020 8744 0074

Energy Rating: E. We aim to make our particulars both accurate and reliable. However they are not guaranteed; nor do they form part of an offer or contract. If you require clarification on any points then please contact us, especially if you're traveling some distance to view. Please note that appliances and heating systems have not been tested and therefore no warranties can be given as to their good working order.

**RICS** Regulated  
Estate Agent  
and Letting Agent

dexters.co.uk