



Clifden Road, TW1

£775,000

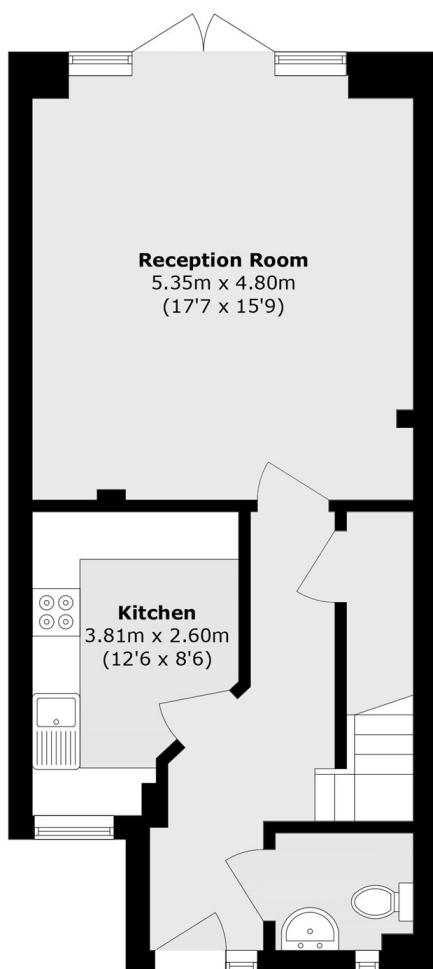
This beautiful two double bedroom house is set on a prime road just off Twickenham high street and includes a modern kitchen, a downstairs WC and the added bonus of off-street parking. There is no onward chain with the property.

Clifden Road is a highly sought after road directly off Twickenham high street where you will find a vast array of shops, bars and restaurants. Twickenham station with it's fast link to London Waterloo.

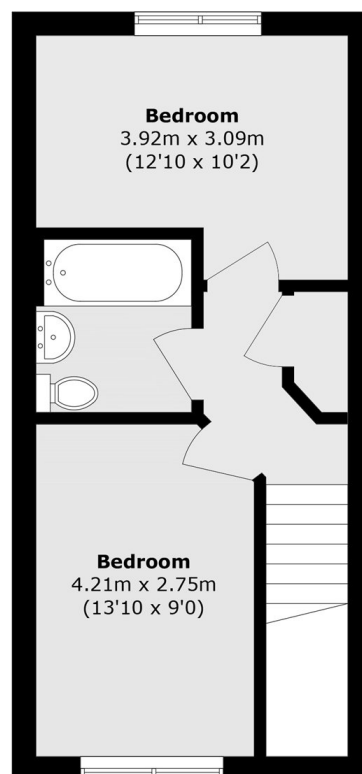
Features

- Two Double Bedrooms
- Off-Street Parking
- Large Garden
- Downstairs WC
- Modern Development
- Central Location

Clifden Road, Twickenham, TW1



Ground Floor



First Floor

Total area (approx.): 86.1 sq. m (926.7 sq. ft)