



## Candler Mews, TW1

### £399,950

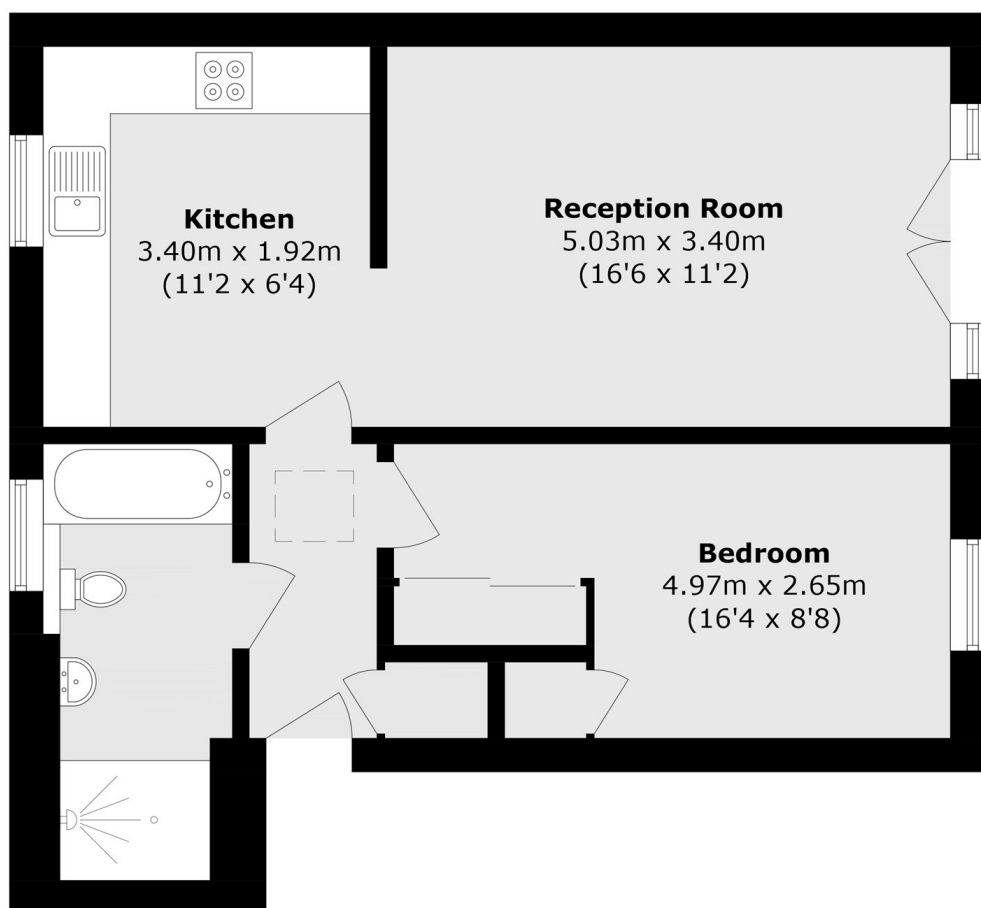
Situated in a private development is this large one double bedroom apartment that has a modern kitchen, spacious reception room, lots of storage throughout and allocated parking.

Amyand Park Road is ideally situated close to Twickenham and St Margarets mainline station. There is easy access to the A316 with its links to the M3, M4 and M25 motorways.

### Features

- Private Development
- Modern Apartment
- One Double Bedroom
- Allocated Parking
- Secure Phone Entry System
- Modern Interior

# Candler Mews, Twickenham, TW1



Total area (approx.): 52.2 sq. m (561.8 sq. ft)