



Lime Grove, TW1

£3,900 Per calendar month

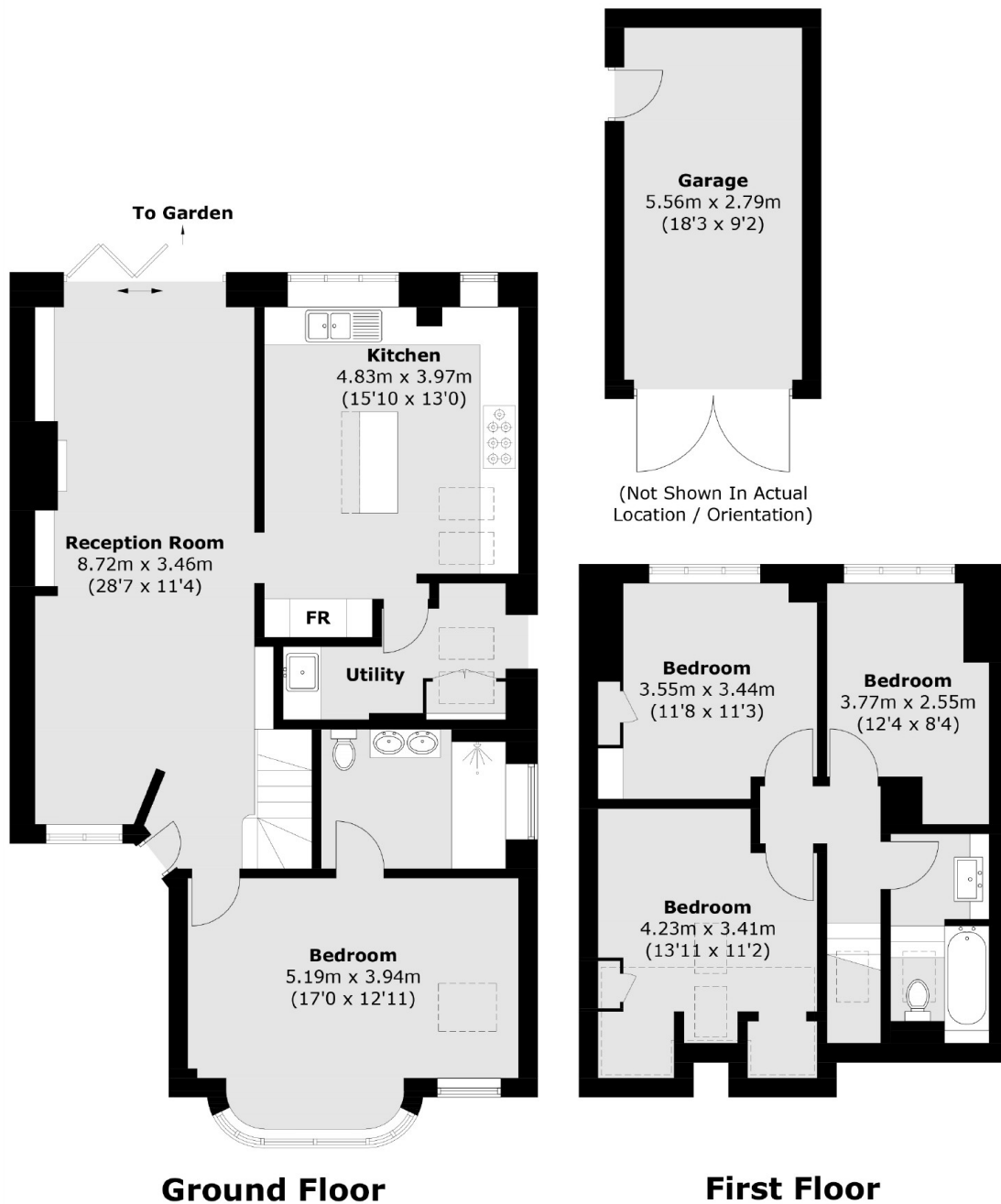
A deceptively large chalet bungalow which is located in a peaceful and popular cul-de-sac in Twickenham. The property has been tastefully extended and provides a spacious living room, a modern kitchen, four bedrooms and two bath/shower rooms. The property further benefits from off-street parking and a fantastic South facing rear garden.

Lime Grove is an attractive cul-de-sac located just off London Road in the heart of Twickenham. The property is conveniently located to all local amenities including both private and state schools and is 0.4 miles to Twickenham mainline station and easy access to the A316 to and from London.

Features

- Semi-Detached Bungalow
- Four Bedrooms
- South Facing Garden
- Modern kitchen
- Off-Street Parking
- Close To Twickenham Town Centre

Lime Grove, Twickenham, TW1



Total area (approx.): 131.7 sq. m (1,417.6 sq. ft)
Garage: 16.0 sq. m (172.2 sq. ft)

Dexters

Twickenham
84 Heath Road
Twickenham
TW1 4BW
Lettings
020 8744 2233

Energy Rating: D. We aim to make our particulars both accurate and reliable. However they are not guaranteed; nor do they form part of an offer or contract. If you require clarification on any points then please contact us, especially if you're traveling some distance to view. Please note that appliances and heating systems have not been tested and therefore no warranties can be given as to their good working order.

 **RICS** | Regulated
Estate Agent
and Letting Agent

dexters.co.uk