



Montrose Avenue, TW2

£950,000

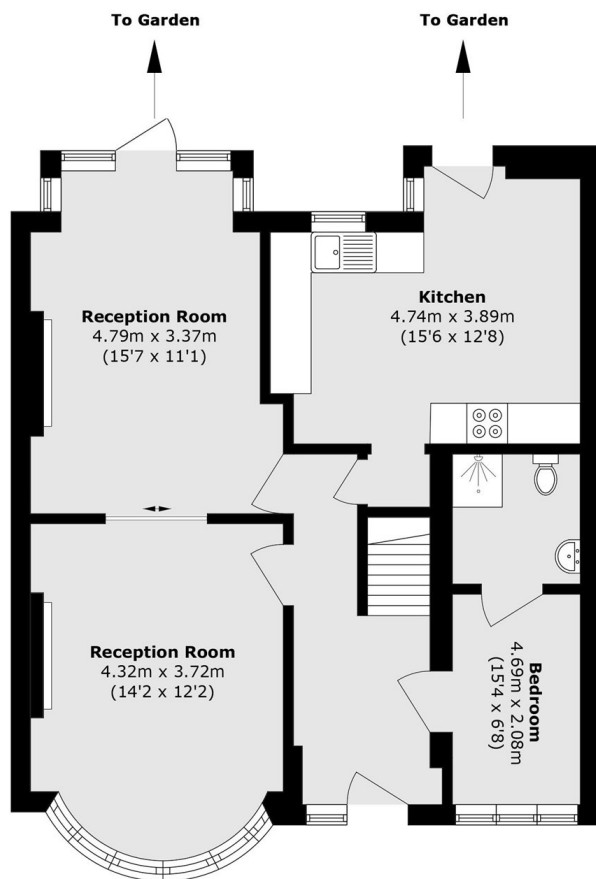
A spacious four double bedroom semi-detached family home ideally located just moments from the High Street. Offering two reception rooms, two bathrooms and a large rear garden perfect for families and entertaining. The front garden could easily be changed into off road parking and further potential to extend the house STPP.

Montrose Avenue is a highly sought after road nestled behind the town centre where you will find a vast array of shops, pubs and restaurants. Whitton mainline station has a fast link to London Waterloo and is just a few hundred yards away.

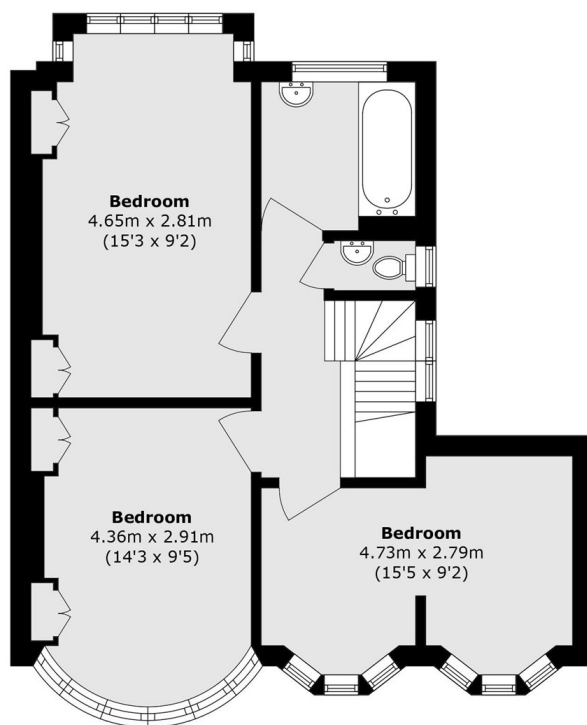
Features

- Four Double Bedrooms
- Semi Detached Family Home
- Large Rear Garden
- Two Bathrooms
- Moments From The High Street
- Further Potential To Extend STPP

Montrose Avenue, Whitton, TW2



Ground Floor



First Floor

Total area (approx.): 132.1 sq. m (1421.9 sq. ft)