



Richmond Road, TW1

£2,300 Per calendar month

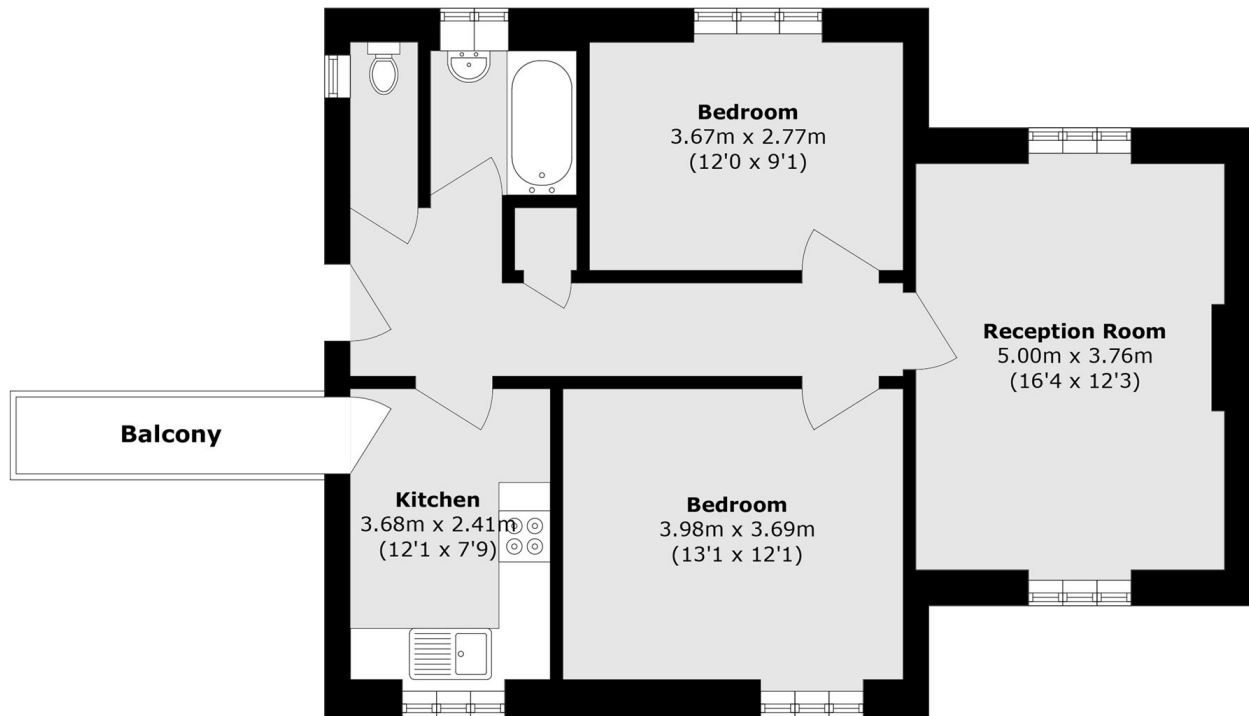
This modern apartment features two large double bedrooms, wood flooring throughout and a modern interior. Secure gated off-street parking is included, with the property positioned opposite Orleans School in Twickenham.

Westbourne House is located opposite Orleans School and is close to both St. Margarets and Twickenham High Streets.

Features

- Two Double Bedrooms
- Wood Floors Throughout
- Apartment Block
- Spacious
- Parking
- Close To Marble Hill

Richmond Road, Twickenham, TW1



Total area (approx.): 68.6 sq. m (738.4 sq. ft)
Balcony area (approx.): 3.1 sq. m (33.4 sq. ft)