



## Marbaix Gardens, TW7

£3,650 Per calendar month

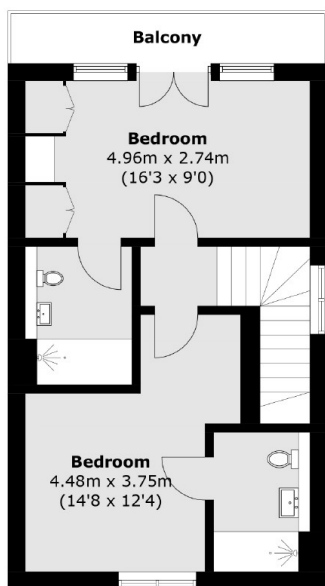
An exquisite four double bedroom detached house in this very well maintained gated built development with private garden, garage and two large living space. Ideal for a family.

Marbaix Gardens is situated in the heart of Isleworth, within with easy access to Osterley Tube Station (Piccadilly line), Isleworth BR Mainline Station and the A4 with its routes into London and Heathrow. Syon Park and the amenities of Isleworth, Osterley & St Margaret's are all within easy reach.

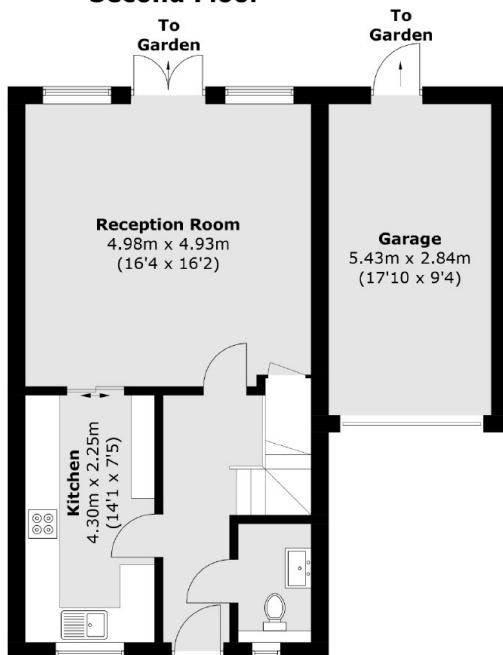
### Features

- Gated Development
- Detached House
- Four Double Bedrooms
- Two Reception Rooms
- Three Bathrooms
- Private Garage

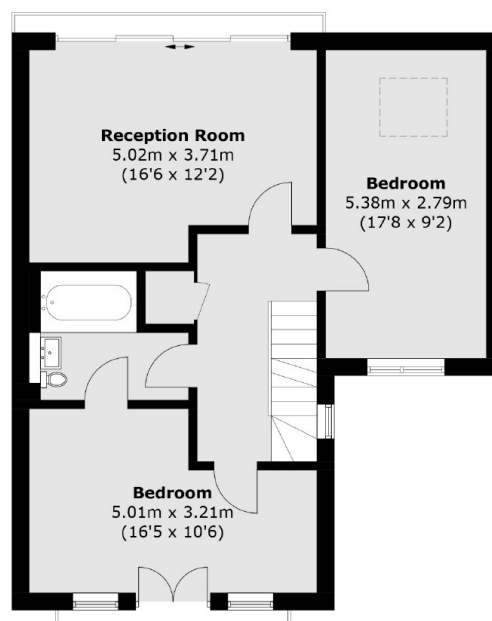
# Marbaix Gardens, Isleworth, TW7



**Second Floor**



**Ground Floor**



**First Floor**

Total area (approx.): 153.9 sq. m (1,656.4 sq. ft)  
Garage: 15.5 sq. m (166.8 sq. ft)  
Balcony area: 4.7 sq. m (50.6 sq. ft)