



Parkside Road, TW3

£625,000

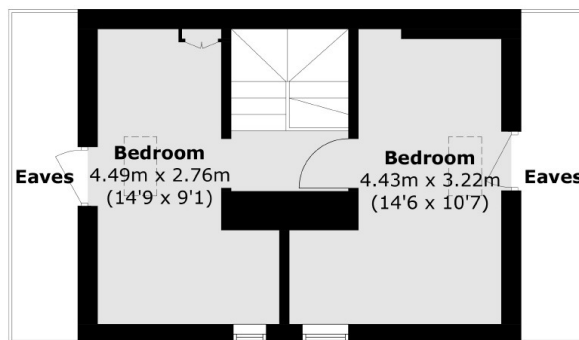
We are delighted to bring to the market this delightful semi-detached Victorian house offering a new family or investor the opportunity to add their own stamp. Arranged over three floors and packed with period features and high ceilings, this charming house comprises of four bedrooms, two bathrooms and two reception rooms. Further benefits include a private rear garden, off street parking and additional scope to extend (STPP)

Situated in a conservation area on a sought after and premier tree lined road, close to excellent local schools, park and transport links. Neighbouring areas of Whitton, Twickenham and Isleworth are all within easy reach.

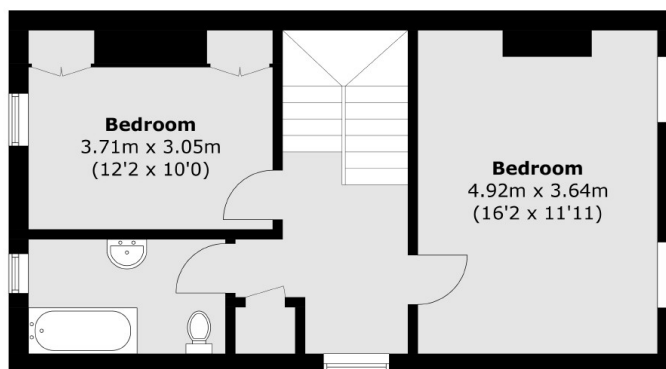
Features

- Victorian Semi Detached House
- Four Bedrooms
- Large Garden
- Scope to Extend
- Off Street Parking
- Quiet Road

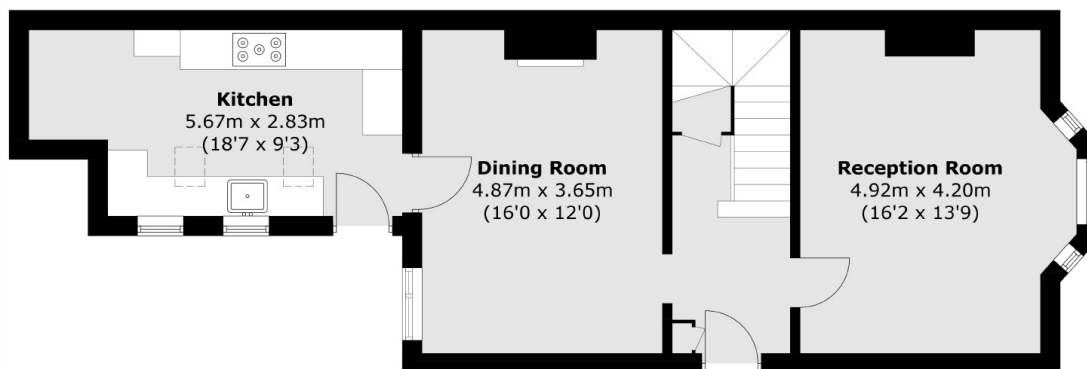
Parkside Road, Hounslow, TW3



Second Floor



First Floor



Ground Floor

Total area (approx.): 137.8 sq. m (1,483.2 sq. ft)
(Excluding Eaves)