



## Colwyn Crescent, TW3

### £565,000

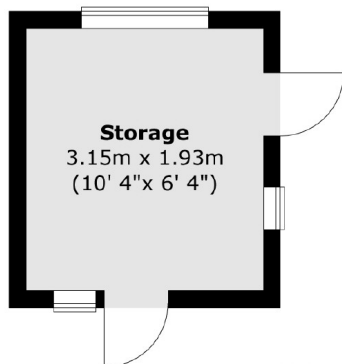
Offered to the market with no onward chain is this delightful semi-detached, three bedroom house on a popular and quiet road in a central location. Benefits include a generous sunny garden and driveway, in addition to further extension potential (subject to planning permission)

Colwyn Crescent is located on a quiet and popular residential road in a central location. There are excellent transport links close by, with Hounslow East tube station and Hounslow Overground Station a short walk away. There are a vast array of shops, bars and restaurants close by making this a convenient location for any homeowner or investor.

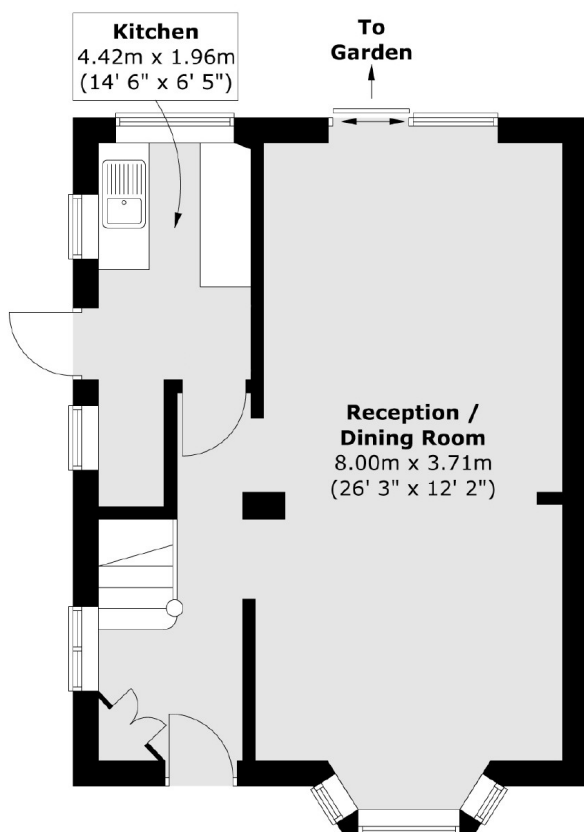
### Features

- Semi Detached House
- Three Bedrooms
- Driveway
- Scope to Extend (STPP)
- Central Location
- No Chain

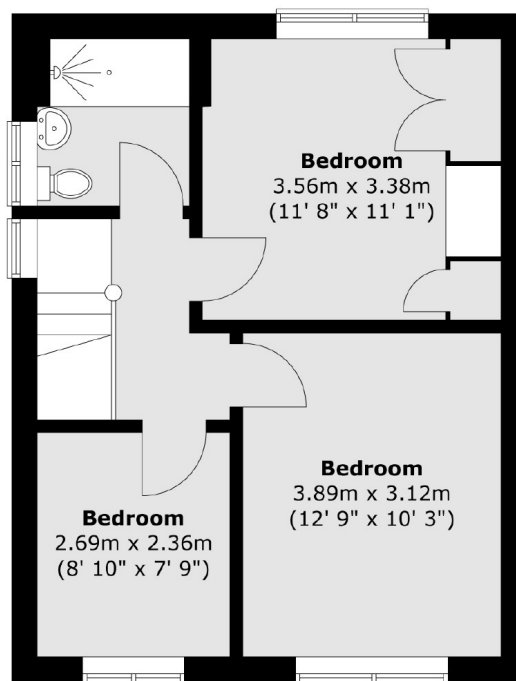
# Colwyn Crescent, Hounslow, TW3



Ground Floor



First Floor



Total area (approx.) : 84.2 sq. m (906 sq. ft)  
Total storage area (approx.) : 8.9 sq. m (96 sq. ft)