



Draymans Way, TW7

£229,950

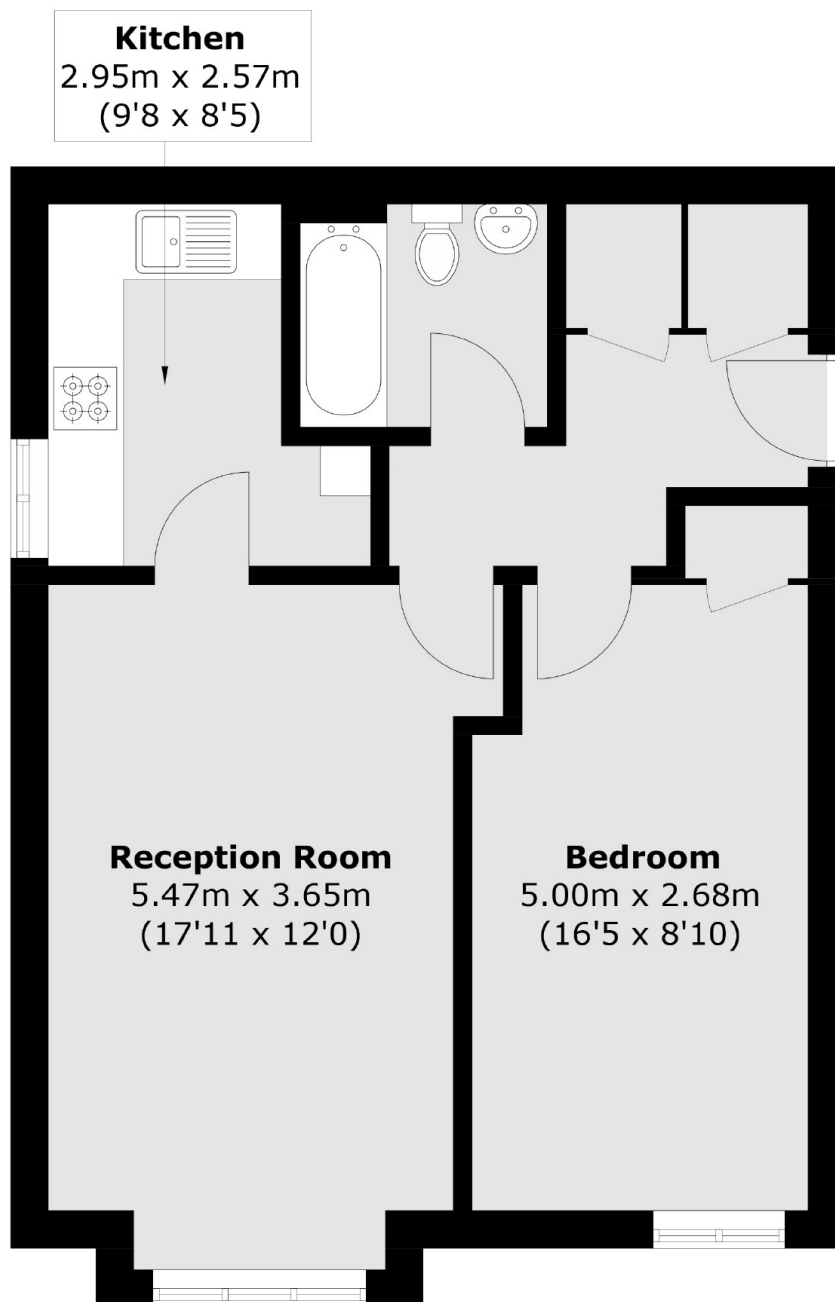
A beautiful one bedroom apartment situated in the highly sought after Maltings development. In good condition throughout, the property further benefits from a large reception room, recently refurbished kitchen, ample storage and allocated parking. Sold with no Onward Chain.

Located close to excellent local parks, schools and shops as well as easy access to Isleworth Mainline Station and neighbouring areas of St Margarets, Richmond and Twickenham.

Features

- Great Condition
- No Onward Chain
- Allocated Parking
- Close To Amenities
- Refurbished Kitchen
- Sought After Development

Draymans Way, Isleworth, TW7



Dexters

Isleworth
568 London Road
Isleworth
TW7 4EP
Sales
020 8560 1177

Energy Rating: C. We aim to make our particulars both accurate and reliable. However they are not guaranteed; nor do they form part of an offer or contract. If you require clarification on any points then please contact us, especially if you're traveling some distance to view. Please note that appliances and heating systems have not been tested and therefore no warranties can be given as to their good working order.

 **RICS** | Regulated
Estate Agent
and Letting Agent

[dexters.co.uk](https://www.dexters.co.uk)