



Layton Road, TW3

£550,000

A beautifully kept three bedroom house on one of Hounslow's most sought after and popular residential roads. Presented in excellent condition throughout, this property is offered with no onward chain and features tremendous scope to extend (STPP), making it the ideal purchase for a growing family or someone looking to add value. Further benefits include two generous reception rooms, separate kitchen, front garden and large rear garden.

Layton Road is a sought after and popular residential road conveniently located with Hounslow High Street, Inwood Park, Hounslow Central Station (Piccadilly line) and Hounslow Overground Station within walking distance. There are good local schools in addition to a vast array of amenities nearby.

Features

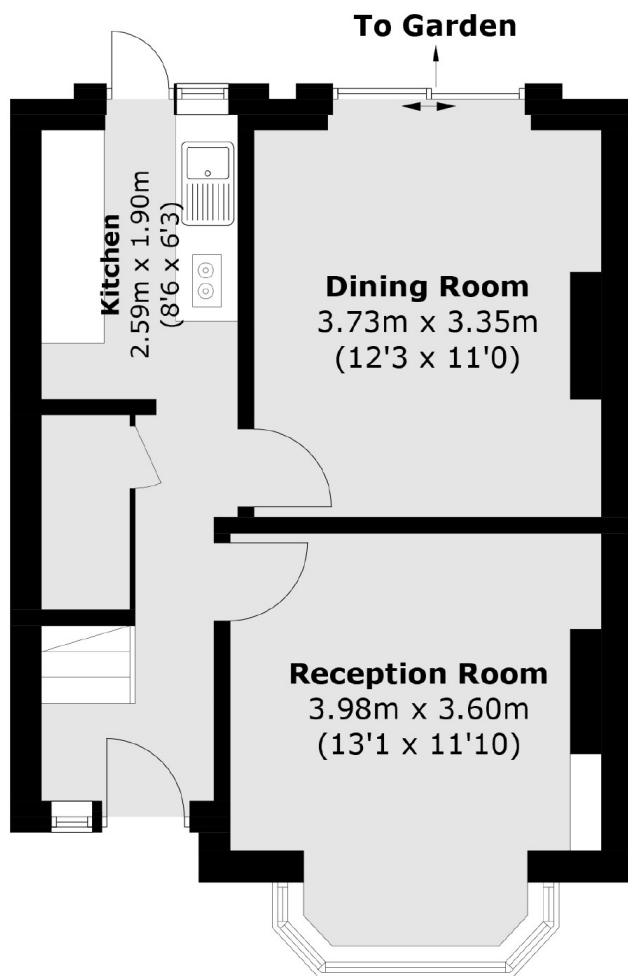
- Freehold House
- Three Bedrooms
- Two Reception Rooms
- Large Rear
- Scope to Extend (STPP)
- No Chain



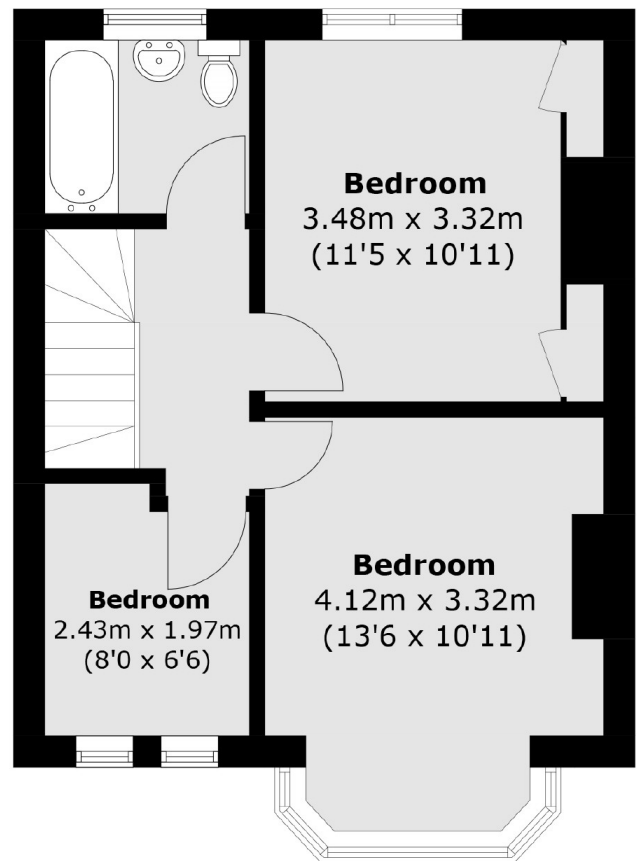
Layton Road, TW3



Layton Road,
Hounslow, TW3



Ground Floor



First Floor

Total area (approx.): 77.8 sq. m (837.4 sq. ft)