



Richens Close, TW3

£1,595 Per calendar month

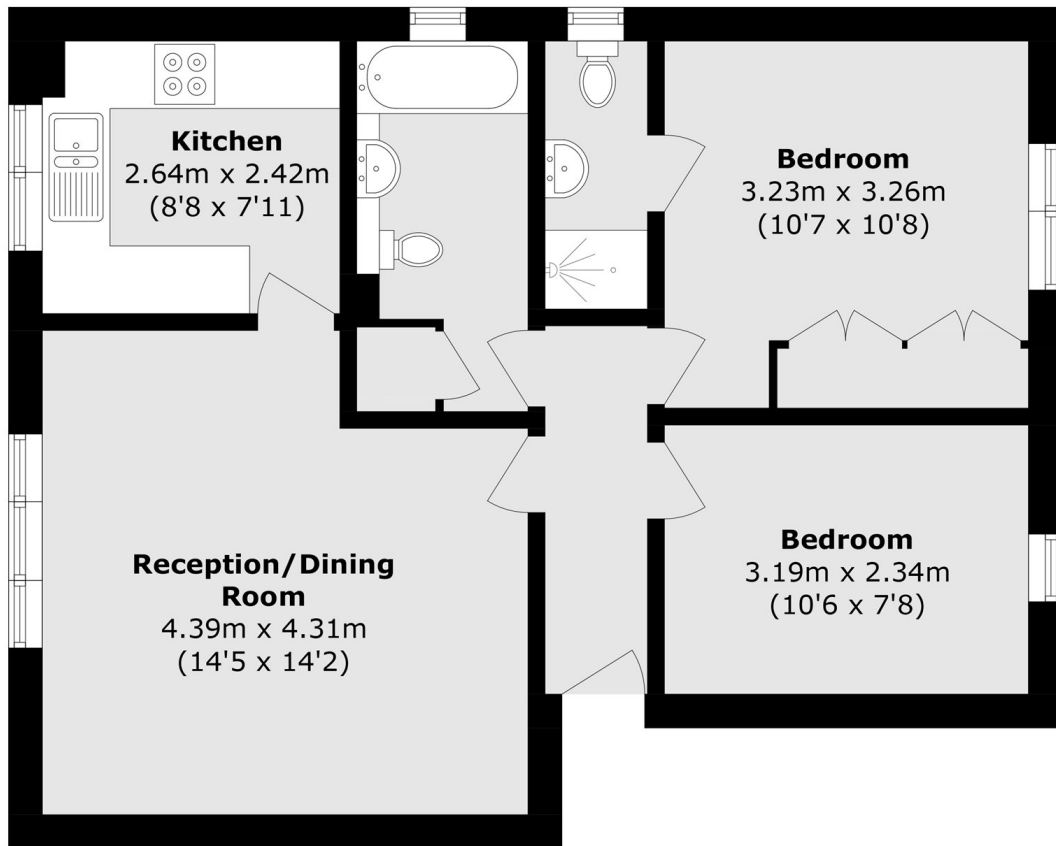
A large two bedroom flat in a gated development with two bathrooms, bright reception rooms, ample storage space and off street parking.

The property is located on the borders of Hounslow and Isleworth close to local shops and restaurants and a short distance to Hounslow East Underground station.

Features

Gated Development
Two Bedrooms
Two Bathrooms
Bright Reception Room
Off Street Parking
Ample Storage

Richens Close, Hounslow, TW3



Total area (approx.): 55.3 sq. m (595.2 sq. ft)