



## St. Christophers Close, TW7

£1,525 Per calendar month

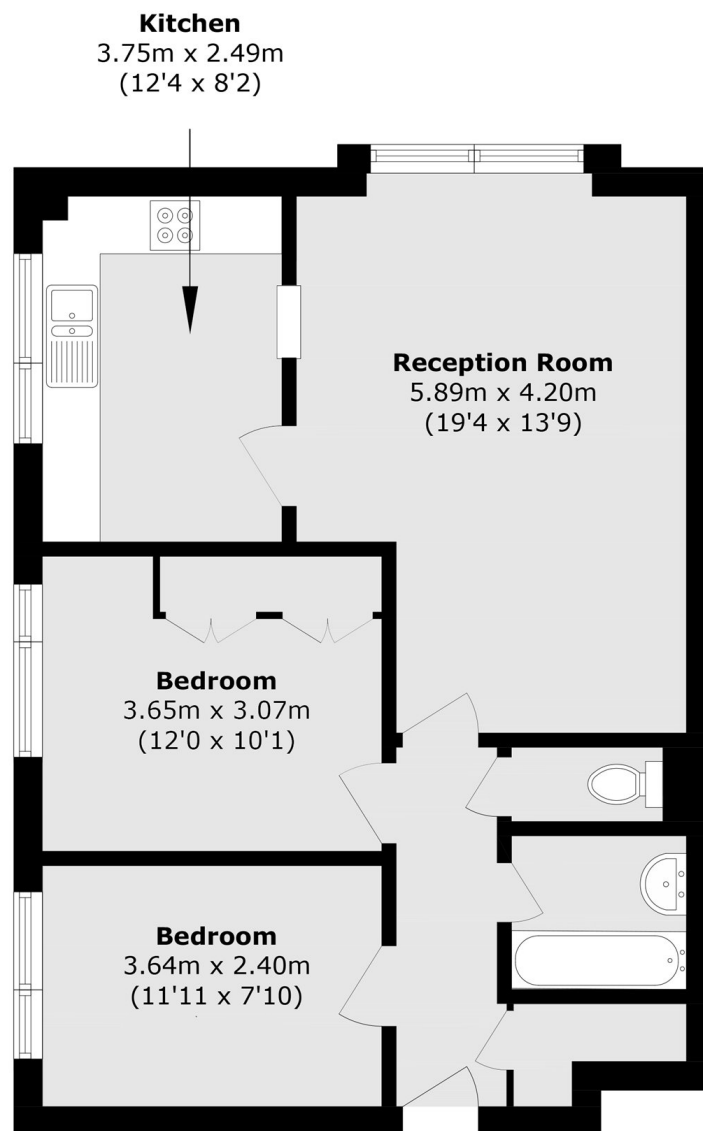
A bright, purpose-built apartment featuring two generous double bedrooms, a modern bathroom with separate WC, and a spacious living area. Set within a well-maintained development offering peaceful communal gardens, perfect for relaxation and everyday convenience.

St Christophers Close is off Thornbury Road, which provides easy access to the A4 and M4. Osterley Tube and Isleworth mainline Stations are within easy walking distance.

### Features

- Popular Development
- Two Double Bedrooms
- Dual Aspect Living Room
- Separate Kitchen
- Ample Storage Space
- On Street Parking

# St. Christophers Close, Isleworth, TW7



Total area (approx.): 63.5 sq. m (683.5 sq. ft)